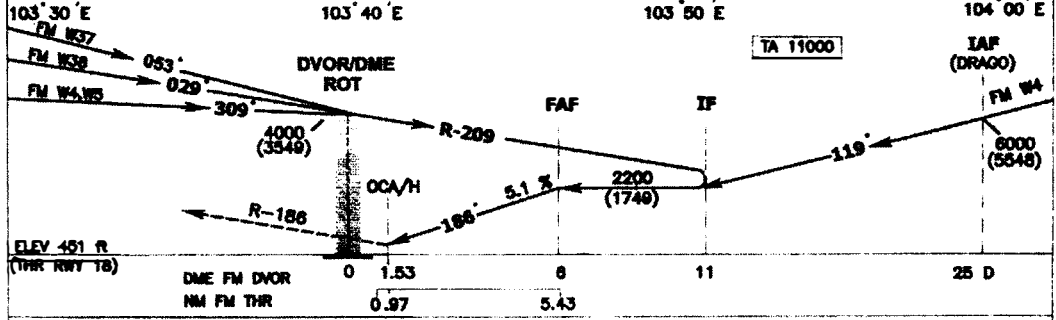
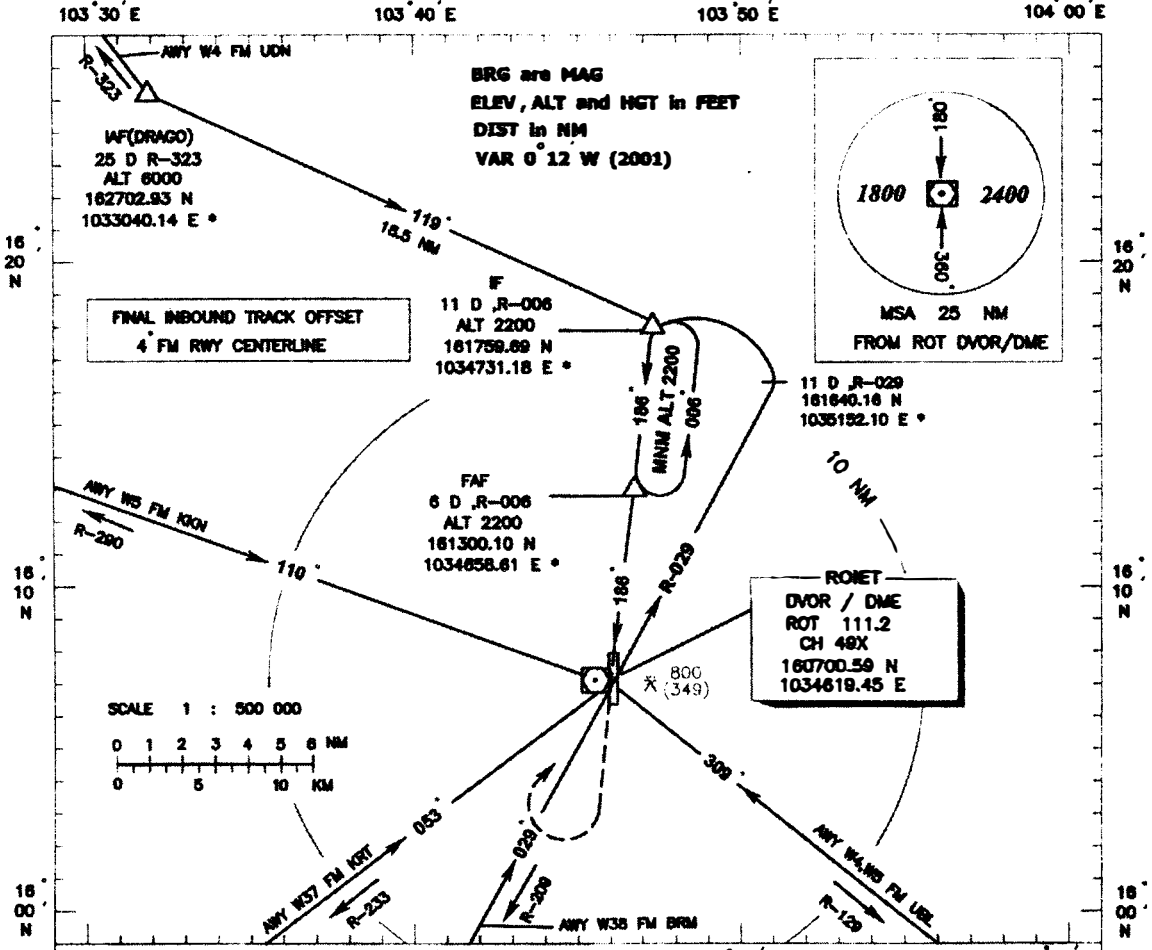


**INSTRUMENT**  
**APPROACH**  
**CHART - ICAO**

**AERODROME ELEV 451 ft**  
**HEIGHTS RELATED TO**  
**AERODROME ELEV**

APP : 125.4  
TWR : 119.75, 238.6

**ROJET / Rojet**  
**VOR/DME**  
**RWY 18**



**MISSED APPROACH : Climb on track 186° to the DVOR/DME then climb on R-186 to 1500(1049) ft then turn right back to FAF 2200(1749) ft and hold.**

					Distance	2 D	3 D	4 D	5 D		
OCA/H	A	B	C	D	Altitude (Height)	950 (499)	1240 (789)	1570 (1119)	1880 (1429)		
Straight-in approach	800(349)				GS(kt)	90	120	140	160	180	200
Circling	850(399)		950(499)		Rate of descent (ft/min)	485	620	725	825	930	1030