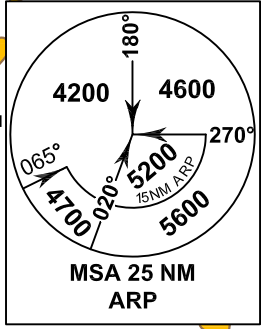
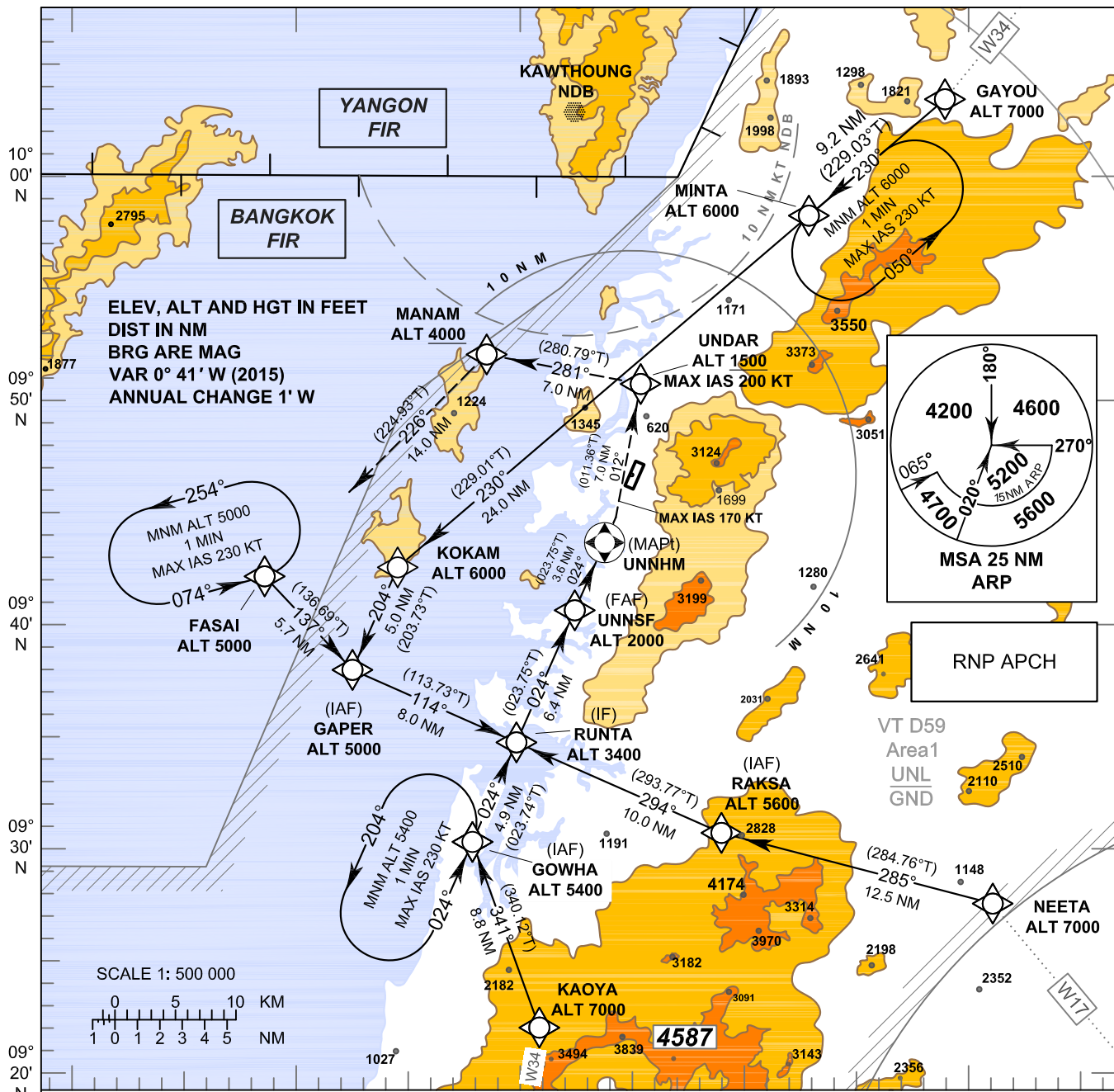


**INSTRUMENT  
APPROACH  
CHART - ICAO**

**AERODROME ELEV 57 FT  
HEIGHTS RELATED TO  
THR RWY 02 - ELEV 36 FT**

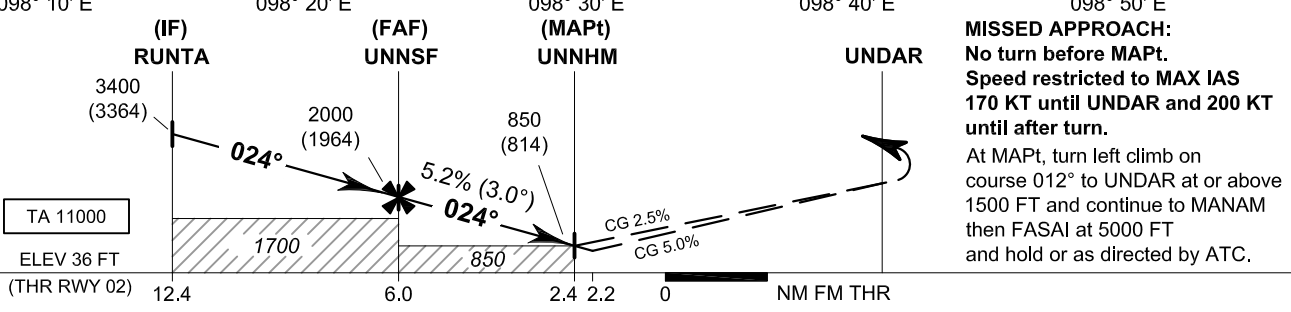
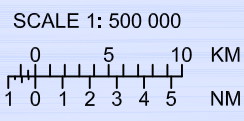
APP : 125.1  
TWR : 122.25 , 121.5

**RANONG / Ranong (VTSR)  
RNAV (GNSS) RWY02**



RNP APCH

VT D59  
Area1  
UNL  
GND



**MISSED APPROACH:**  
No turn before MAPt.  
Speed restricted to MAX IAS 170 KT until UNNDAR and 200 KT until after turn.  
At MAPt, turn left climb on course 012° to UNNDAR at or above 1500 FT and continue to MANAM then FASAI at 5000 FT and hold or as directed by ATC.

OCA/H	A	B	C	D	NM to THR 02	FAF	5 NM	4 NM	3 NM	2.4 NM		
LNAV	850 (814)				Altitude (Height)	2000 (1964)	1665 (1629)	1350 (1314)	1035 (999)	850 (814)		
					Ground speed	knot	70	90	100	120	140	160
Circling (OCH AAL)	Not Authorized				Rate of descent	(ft/min)	369	474	527	632	737	843

**NOTE : OCA (OCH): 780 (744) FT; MAPt at 2.2 NM FM THR can be achieved for all aircraft categories which can commence a missed approach climb gradient of 5.0% (304 FT/NM) until passing UNNDAR.**