

**STANDARD DEPARTURE CHART-
INSTRUMENT (SID) - ICAO**

TRANSITION ALTITUDE
11000 FT

SPEED RESTRICTION
MAX IAS 250 KT AT OR
BELOW ALT 10000 FT
UNLESS OTHERWISE
AUTHORIZED BY ATC.

APP : 119.1, 262.5
: 119.4, 262.5
: 120.3, 262.5
: 121.7, 262.5
: 122.35, 262.5
: 124.35, 262.5
: 125.2, 262.5
DAR : 125.5, 262.5
TWR : 118.1, 236.6
ATIS : 126.4, 344.6

**BANGKOK/Don Mueang Intl (VTBD)
RNAV RWY21R**

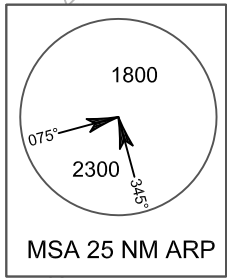
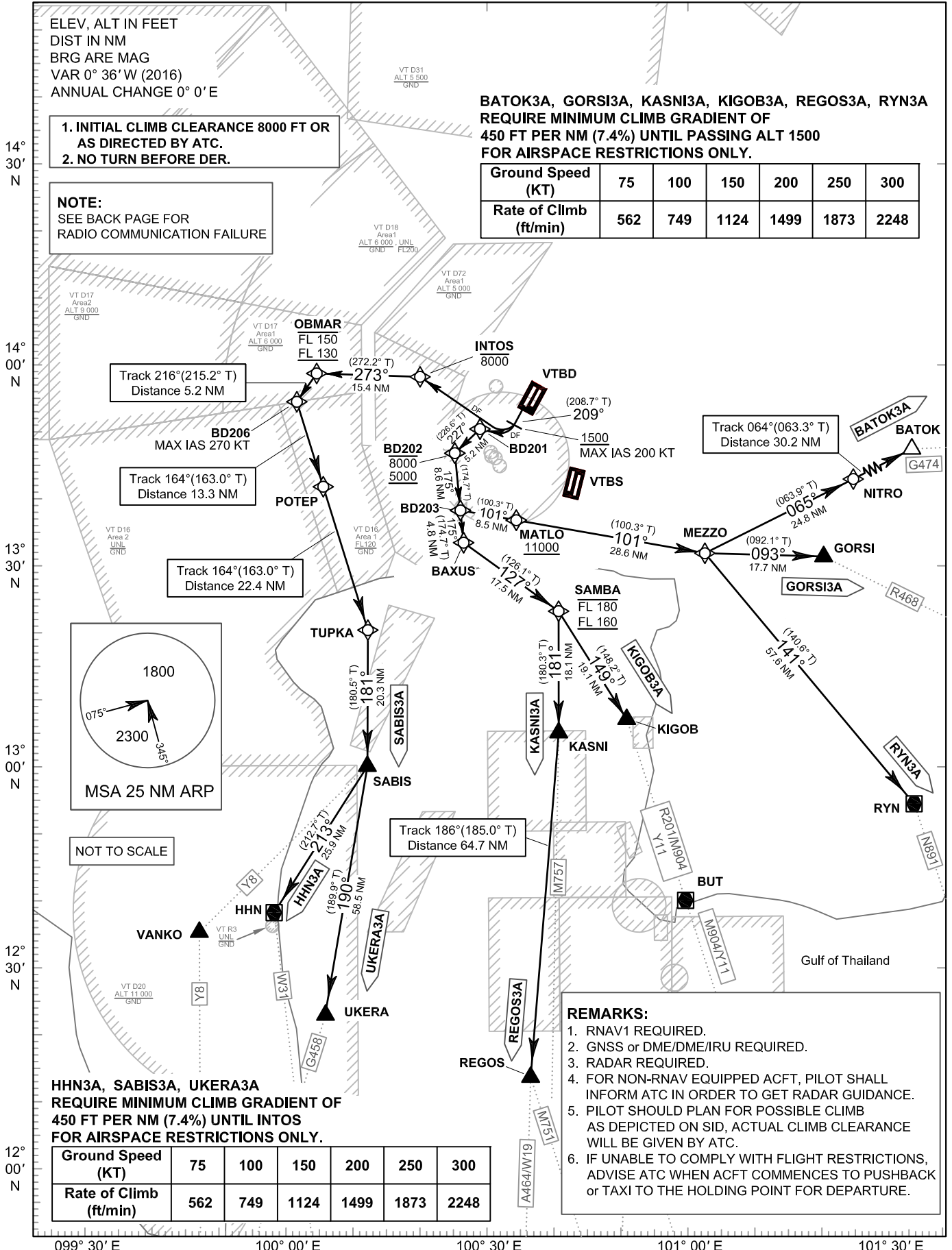
BATOK3A GORSI3A HHN3A
KASNI3A KIGOB3A REGOS3A
RYN3A SABIS3A UKERA3A

**BATOK3A, GORSI3A, KASNI3A, KIGOB3A, REGOS3A, RYN3A
REQUIRE MINIMUM CLIMB GRADIENT OF
450 FT PER NM (7.4%) UNTIL PASSING ALT 1500
FOR AIRSPACE RESTRICTIONS ONLY.**

Ground Speed (KT)	75	100	150	200	250	300
Rate of Climb (ft/min)	562	749	1124	1499	1873	2248

- INITIAL CLIMB CLEARANCE 8000 FT OR AS DIRECTED BY ATC.
- NO TURN BEFORE DER.

NOTE:
SEE BACK PAGE FOR
RADIO COMMUNICATION FAILURE



- REMARKS:**
- RNAV1 REQUIRED.
 - GNSS or DME/DME/IRU REQUIRED.
 - RADAR REQUIRED.
 - FOR NON-RNAV EQUIPPED ACFT, PILOT SHALL INFORM ATC IN ORDER TO GET RADAR GUIDANCE.
 - PILOT SHOULD PLAN FOR POSSIBLE CLIMB AS DEPICTED ON SID, ACTUAL CLIMB CLEARANCE WILL BE GIVEN BY ATC.
 - IF UNABLE TO COMPLY WITH FLIGHT RESTRICTIONS, ADVISE ATC WHEN ACFT COMMENCES TO PUSHBACK or TAXI TO THE HOLDING POINT FOR DEPARTURE.

**HHN3A, SABIS3A, UKERA3A
REQUIRE MINIMUM CLIMB GRADIENT OF
450 FT PER NM (7.4%) UNTIL INTOS
FOR AIRSPACE RESTRICTIONS ONLY.**

Ground Speed (KT)	75	100	150	200	250	300
Rate of Climb (ft/min)	562	749	1124	1499	1873	2248

CHANGE: NEW PROCEDURES.