

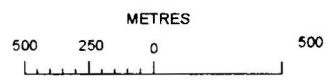
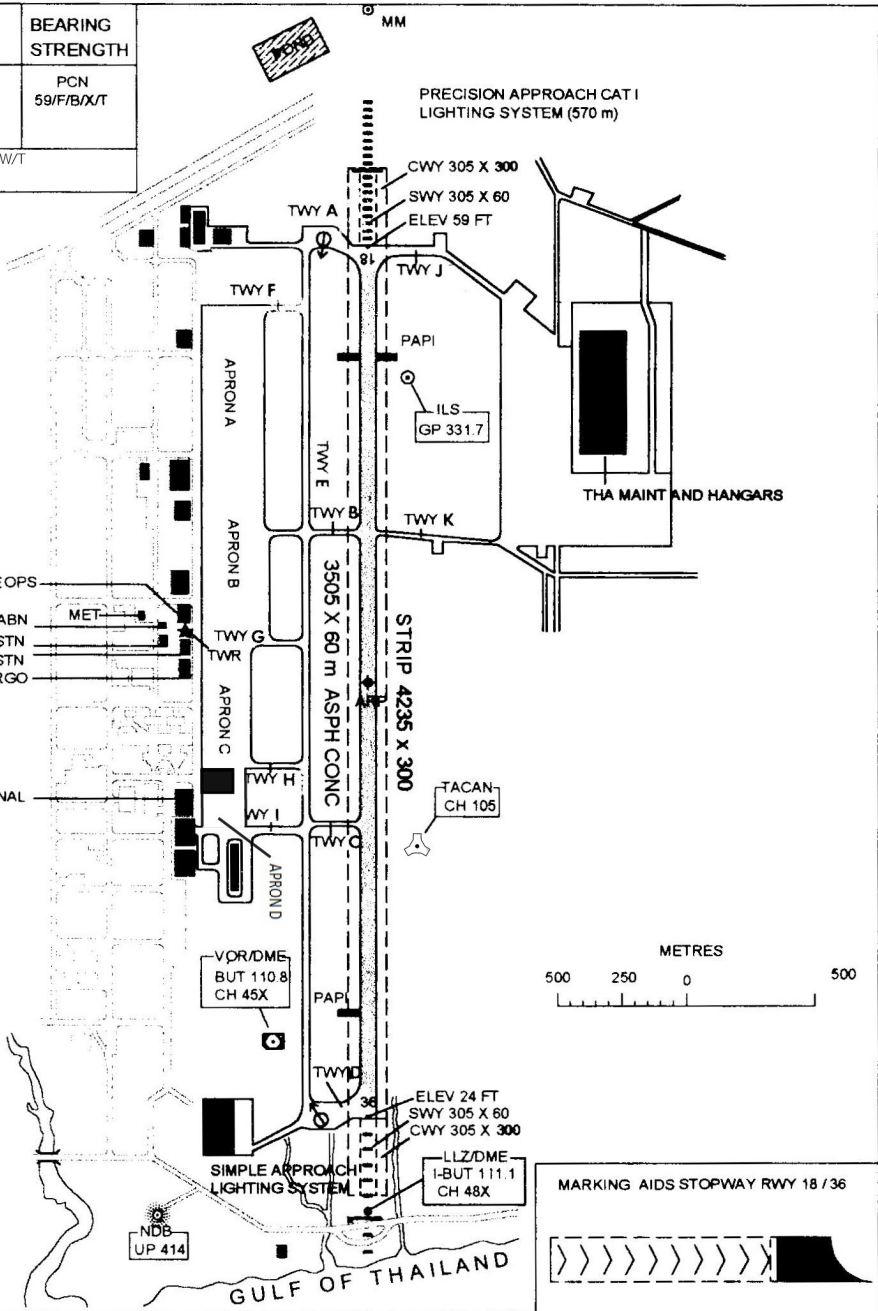
RWY	DIRECTION	THR	BEARING STRENGTH
18	184	12 41 43.40 N 101 00 22.54 E	PCN 59/F/B/X/T
36	004	12 39 51.33 N 101 00 13.30 E	

APRONS STRENGTH	APRONS
	APRON A,B,C : PCN 38/R/B/W/T APRON D : 77/R/B/X/T

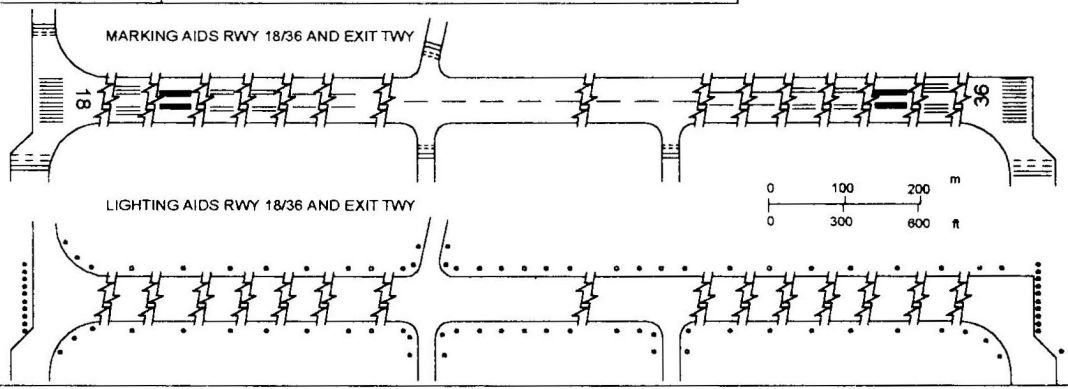
ELEVATIONS IN FEET AND DIMENSION
IN METRES BEARING ARE MAGNETIC

VAR 0.1° W
(2001)
ANNUAL RATE
OF CHANGE 3'E

- BASEOPS
- ABN
- RADAR STN
- FIRE AND RESCUE STN
- CARGO
- PASSENGER TERMINAL



LEGEND	
VOR CHECK POINT	⊕→



CHANGE : APRON D ADDED AND APRONS STRENGTH