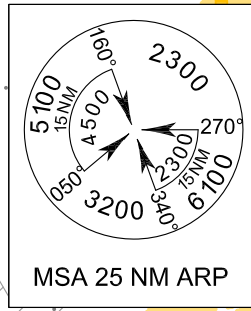
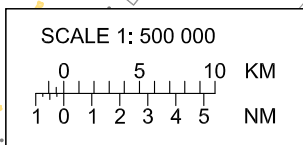
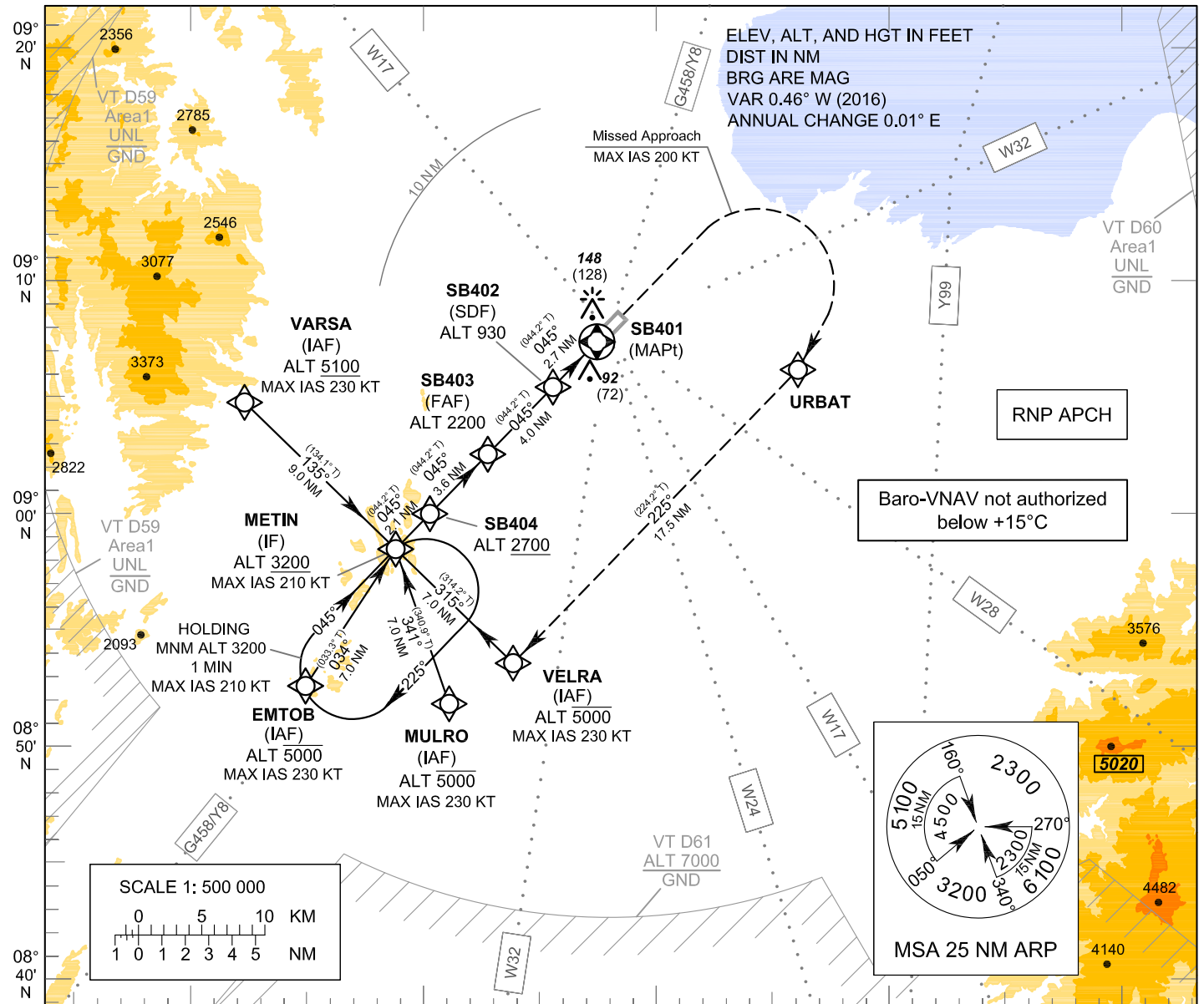


**INSTRUMENT
APPROACH
CHART - ICAO**

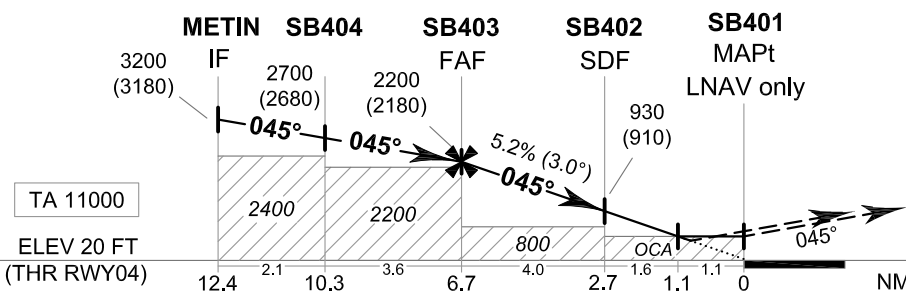
**AERODROME ELEV 20 FT
HEIGHTS RELATED TO
THR RWY04 - ELEV 20 FT**

APP : 123.35 , 240.0
TWR : 122.7 , 274.5
GND : 121.9 , 275.8
ATIS : 125.95

**SURAT THANI / Surat Thanl (VTSB)
RNAV (GNSS) RWY04**



098° 50' E 099° 00' E 099° 10' E 099° 20' E 099° 30' E



MISSED APPROACH:
No turn before MAPt.
Speed restricted to **MAX IAS 200 KT** until after turn.
Climb on track 045° to 1200 FT, then turn right direct to URBAT. Continue to VELRA then METIN at 3200 FT and hold or as directed by ATC.

CHANGE: NEW PROCEDURES.

| OCA/H | A | B | C | D | NM to NEXT WPT | FAF | 6 NM | 5 NM | 4 NM | 3 NM | 2 NM | 1.1 NM |
|--------------------|-----------|---|---|---|-------------------------------|-------------|-------------|-------------|-------------|-------------|-----------|-----------|
| LNAV / VNAV | 340 (320) | | | | Altitude (Height) | 2200 (2180) | 1965 (1945) | 1650 (1630) | 1335 (1315) | 1020 (1000) | 700 (680) | 420 (400) |
| LNAV | 420 (400) | | | | Ground speed | knot | 70 | 90 | 100 | 120 | 140 | 160 |
| Circling (OCH AAL) | 860 (840) | | | | Rate of descent FAF-MAPt 5.2% | ft/min | 369 | 474 | 527 | 632 | 737 | 843 |