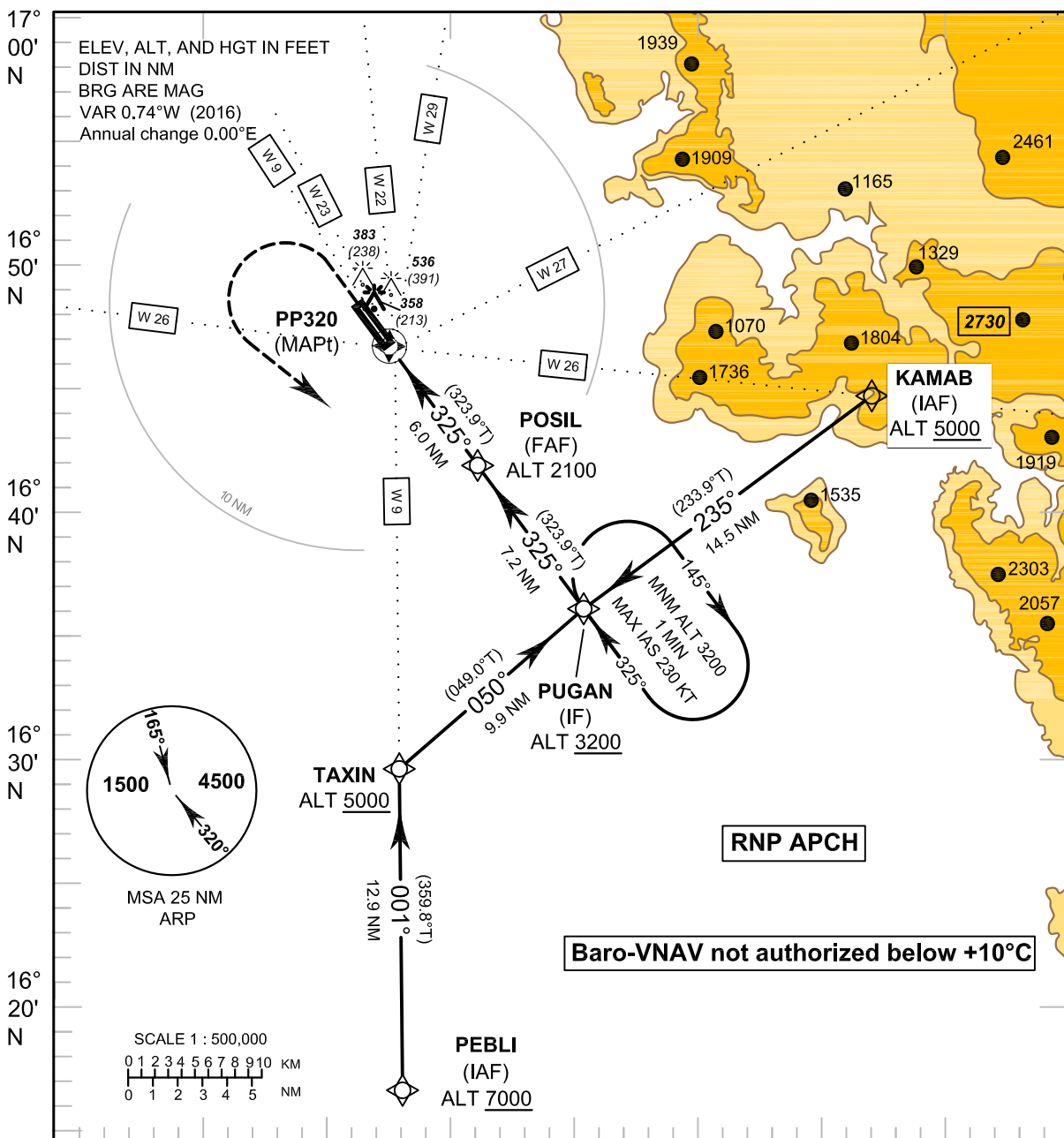


**INSTRUMENT AERODROME ELEV 145 FT**  
**APPROACH HEIGHTS RELATED TO**  
**CHART - ICAO AERODROME ELEV**

APP : 120.7, 284.0  
 TWR : 118.9, 236.6  
 GND : 121.9

**PHITSANULOK/Phitsanulok (VTPP)**  
**RNAV (GNSS) RWY32**



**RNP APCH**

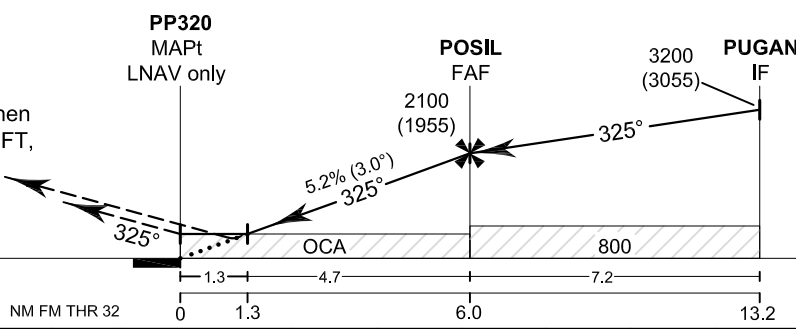
**Baro-VNAV not authorized below +10°C**

**TA 11000**

**Missed Approach :**  
**No turn before MAPt.**  
 Climb on track 325° to 1600 FT, then turn left direct to **PUGAN** at 3200 FT, and hold or as directed by ATC.

**RDH 50 FT**

ELEV 145 FT  
 (THR RWY 32)



OCA/H	A	B	C	D	NM to NEXT WPT	1.3 NM	2 NM	3 NM	4 NM	5 NM	FAF	
LNAV/VNAV	460 (315)				Altitude (Height)	610 (465)	825 (680)	1140 (995)	1460 (1315)	1775 (1630)	2100 (1955)	
LNAV	610 (465)				Ground Speed	knot	70	90	100	120	140	160
Circling (OCH AAL)	840 (695)		930 (785)		Rate of descent FAF-MAPt (5.2%)	ft/min	369	474	527	632	737	843

CHANGE: WPT NAME: