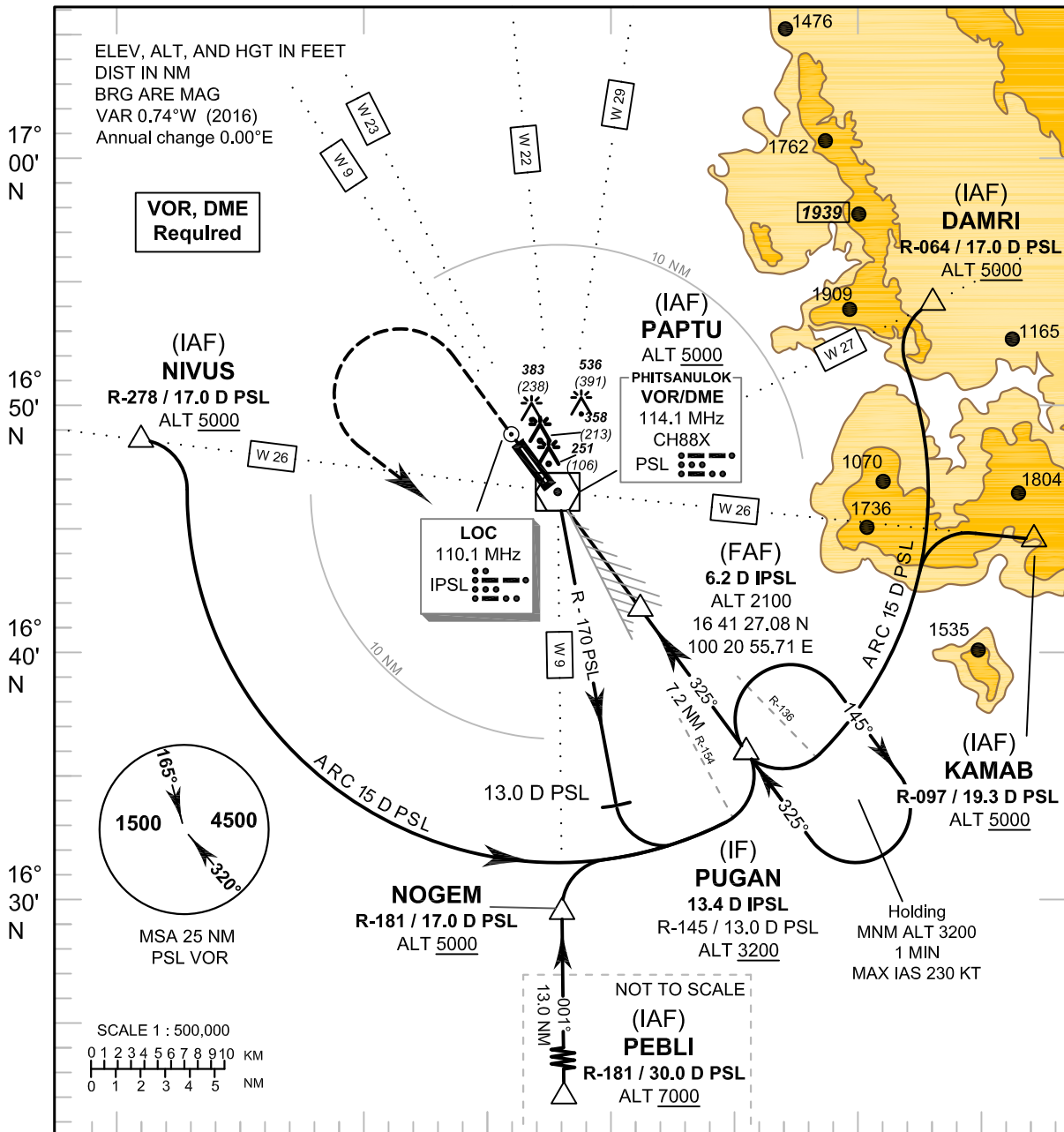


INSTRUMENT AERODROME ELEV 145 FT
APPROACH HEIGHTS RELATED TO
CHART - ICAO THR RWY32 - ELEV 145 FT

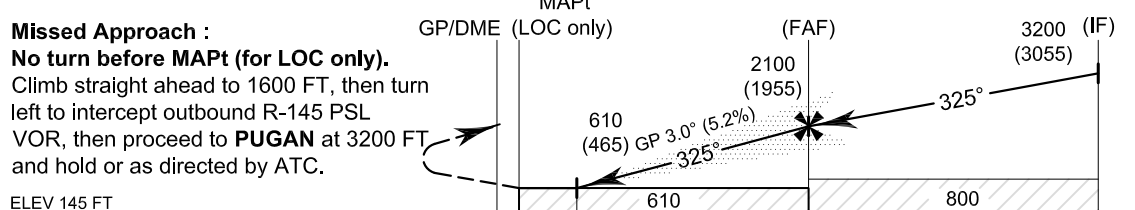
APP : 120.7, 284.0
 TWR : 118.9, 236.6
 GND : 121.9

PHITSANULOK/Phitsanulok (VTPP)
ILS or LOC RWY32



100° 00' E 100° 10' E 100° 20' E 100° 30' E

TA 11000 **RDH 56 FT**



ELEV 145 FT (THR RWY 32)

NM FM THR 32 0 1.3 6.0 13.2

DME FM GP / DME 0.2 1.5 6.2 13.4

OCA/H	A	B	C	D	GS OUT	Distance (IPSL)	1.5 D	2 D	3 D	4 D	5 D	6 D	FAF
Straight-in approach CAT I	370 (225)				GS OUT	Altitude (Height)	610 (465)	765 (620)	1080 (935)	1395 (1250)	1710 (1565)	2025 (1880)	2100 (1955)
LOC only	610 (465)					Ground Speed	knot	70	90	100	120	140	160
Circling (OCH AAL)	840 (695)	930 (785)			Rate of descent (3.0°)	ft/min	372	478	531	637	743	849	

CHANGE: MORSE CODE OF RADIO NAVIGATION AIDS ADDED. WPT NAME: PEBLI ALT.