

**STANDARD DEPARTURE CHART -
INSTRUMENT (SID) - ICAO**

APP : 123.6
TWR : 119.8, 236.6

**NAKHON RATCHASIMA/
Nakhon Ratchasima (VTUQ)
RNAV RWY06**

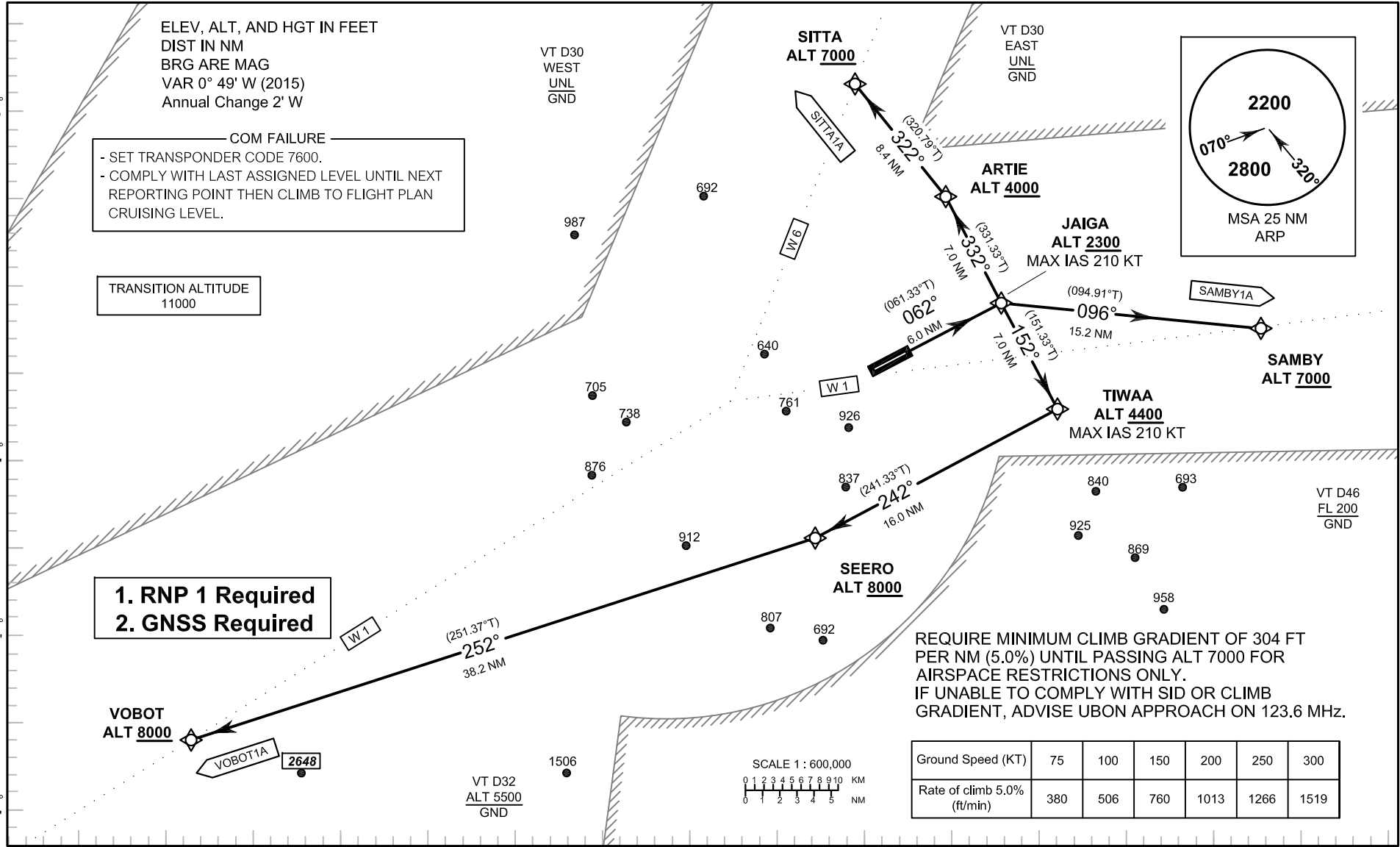
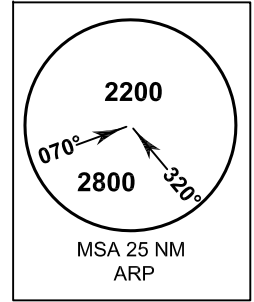
SAMBY1A SITTA1A VOBOT1A

ELEV, ALT, AND HGT IN FEET
DIST IN NM
BRG ARE MAG
VAR 0° 49' W (2015)
Annual Change 2' W

COM FAILURE
- SET TRANSPONDER CODE 7600.
- COMPLY WITH LAST ASSIGNED LEVEL UNTIL NEXT REPORTING POINT THEN CLIMB TO FLIGHT PLAN CRUISING LEVEL.

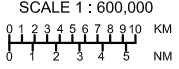
TRANSITION ALTITUDE
11000

**1. RNP 1 Required
2. GNSS Required**



REQUIRE MINIMUM CLIMB GRADIENT OF 304 FT PER NM (5.0%) UNTIL PASSING ALT 7000 FOR AIRSPACE RESTRICTIONS ONLY.
IF UNABLE TO COMPLY WITH SID OR CLIMB GRADIENT, ADVISE UBON APPROACH ON 123.6 MHZ.

Ground Speed (KT)	75	100	150	200	250	300
Rate of climb 5.0% (ft/min)	380	506	760	1013	1266	1519



15° 10' N
15° 00' N
14° 50' N
14° 40' N
14° 30' N

101° 30' E 101° 40' E 101° 50' E 102° 00' E 102° 10' E 102° 20' E 102° 30' E 102° 40' E