

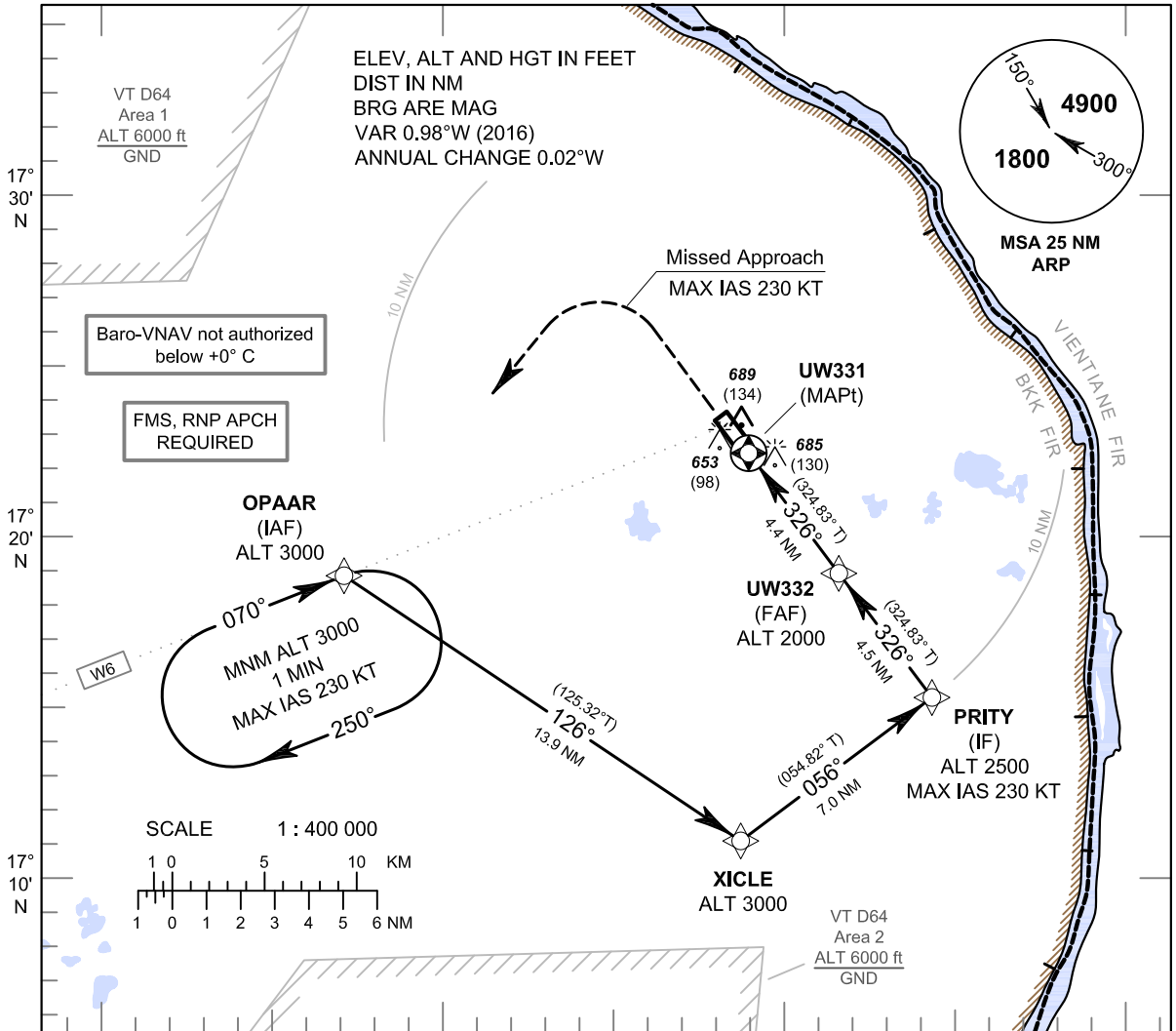
INSTRUMENT APPROACH CHART - ICAO

AERODROME ELEV 587 FT
 HEIGHTS RELATED TO
 THR RWY33 - ELEV 555 FT

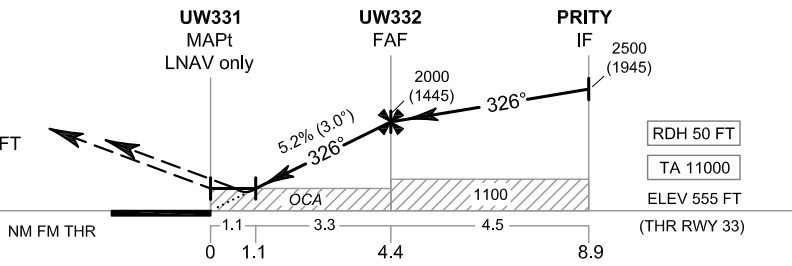
APP : 123.35 , 284.0
 TWR : 122.5
 GND : 121.9

NAKHON PHANOM / Nakhon Phanom (VTUW)

RNAV (GNSS) RWY33



MISSED APPROACH :
 No turn before MAPt.
 Speed restricted to
 MAX IAS 230 KT until after turn.
 Climb on track 326° to 2400 FT
 then turn left direct to OPAAR at 3000 FT
 and hold or as directed by ATC.



OCA/H	A	B	C	D	NM to NEXT WPT	1.1 NM	2 NM	3 NM	4 NM	FAF		
LNAV/VNAV	850 (295)				Altitude (Height)	950 (395)	1235 (680)	1550 (995)	1870 (1315)	2000 (1445)		
LNAV	950 (395)				Ground speed	knot	70	90	100	120	140	160
Circling (OCH AAL)	1100 (513)	1300 (713)			Rate of descent (5.2%)	(ft/min)	369	474	527	632	737	843

CHANGE : MAG VAR. ANNUAL CHANGE. WPT NAME. IAF AND IF ALT. MAPt NAME. OCA/H. BARO VNAV TEMP.