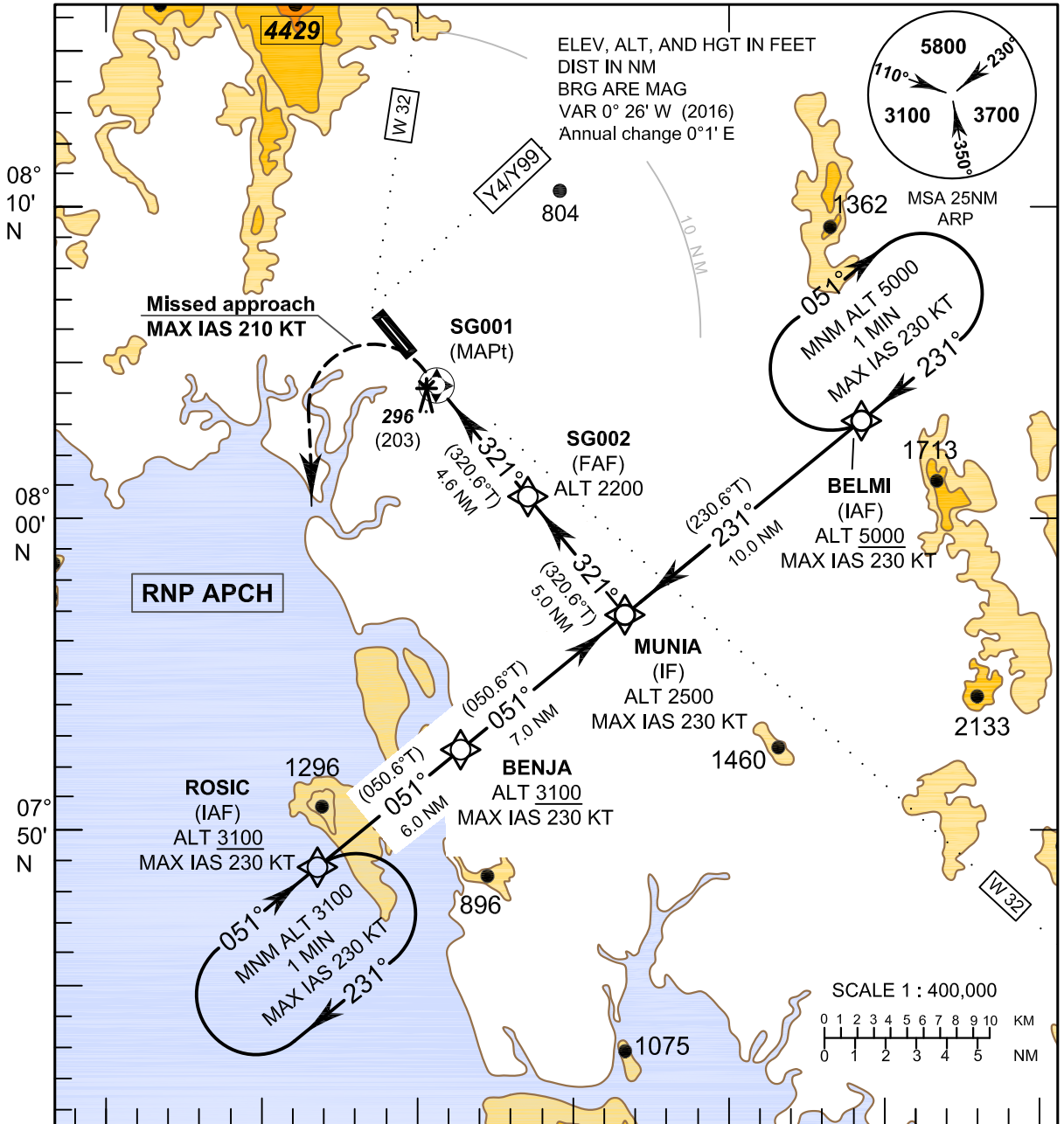


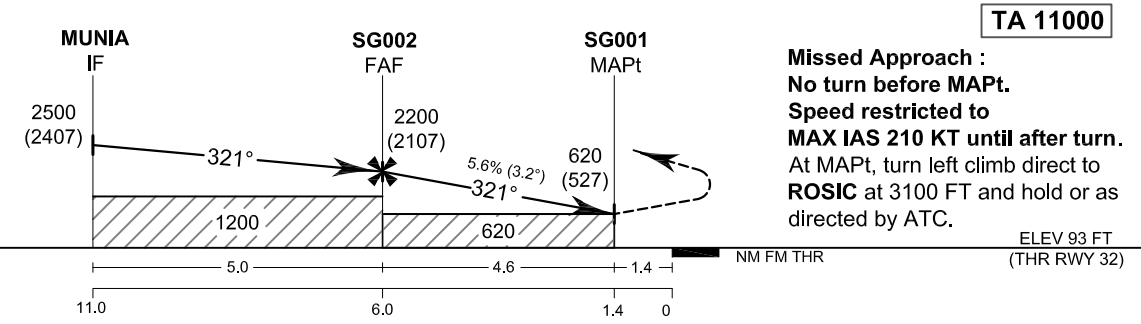
**INSTRUMENT AERODROME ELEV 93 FT**  
**APPROACH HEIGHTS RELATED TO**  
**CHART-ICAO AERODROME ELEV**

APP : 120.05  
 TWR : 122.5, 236.60  
 GND : 121.90  
 ATIS : 132.40

**KRABI/Krabi (VTSG)**  
**RNAV (GNSS) RWY32**



098° 50' E      099° 00' E      099° 10' E      099° 20' E



**Missed Approach :**  
**No turn before MAPt.**  
**Speed restricted to**  
**MAX IAS 210 KT until after turn.**  
 At MAPt, turn left climb direct to **ROSIC** at 3100 FT and hold or as directed by ATC.

ELEV 93 FT  
 (THR RWY 32)

OCA/H	A	B	C	D	NM to NEXT WPT	FAF	5 NM	4 NM	3 NM	2 NM	1.4 NM
					Altitude (Height)	2200 (2107)	1845 (1752)	1505 (1412)	1165 (1072)	825 (732)	620 (527)
LNAV	620 (527)				Ground Speed	knot	70	90	100	120	140
Circling (OCH AAL)	Not Authorized				Rate of descent FAF-MAPt 5.6%	ft/min	397	510	567	681	794

CHANGE: MAG VAR; FAF NAME, MAPt NAME ADDED.  
 BELMI INITIAL SEGMENT, Y99 ADDED.