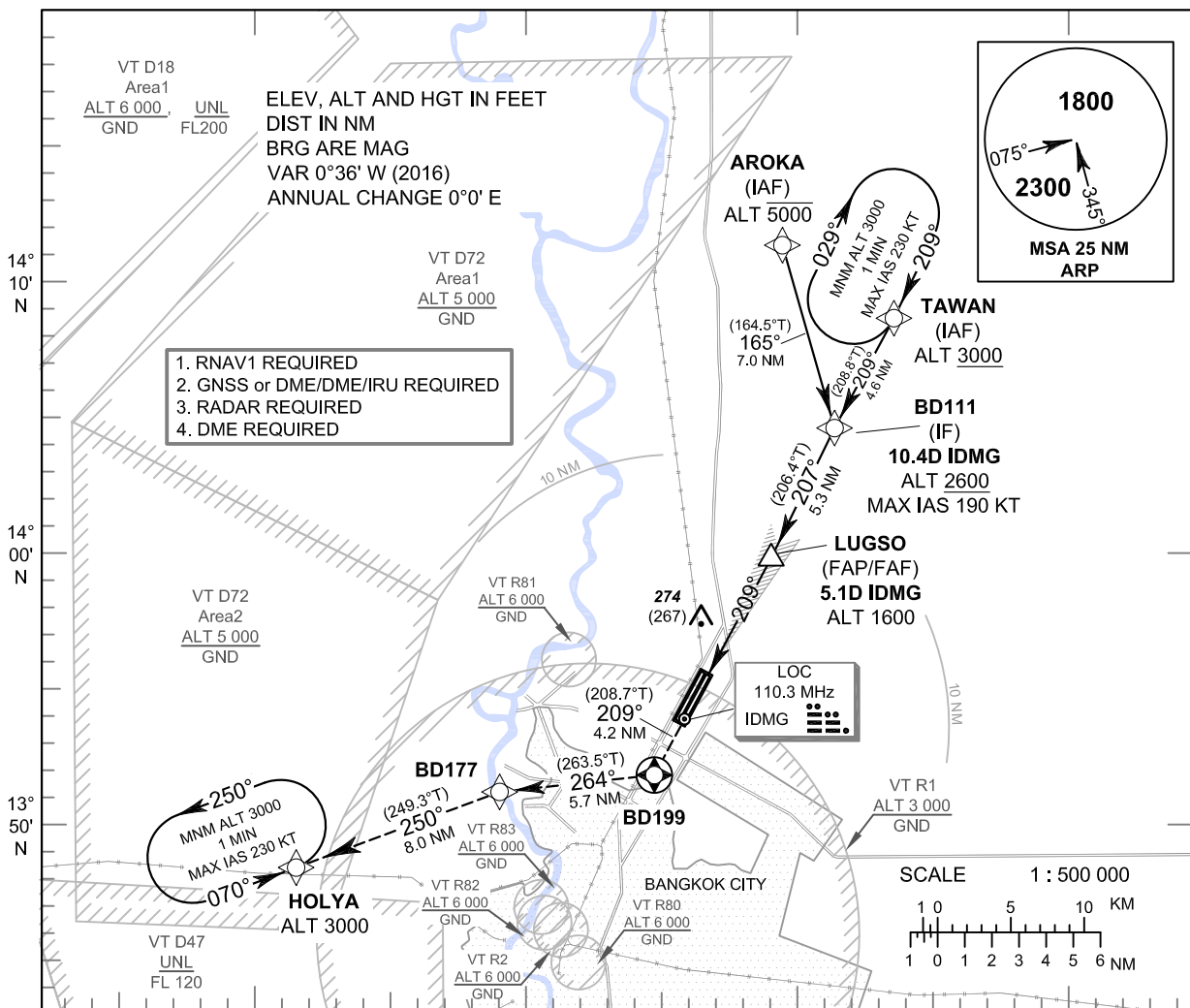


APP : 119.1, 262.5
 : 119.4, 262.5
 : 120.3, 262.5
 : 121.7, 262.5
 : 122.35, 262.5
 : 124.35, 262.5
 : 125.2, 262.5
 DAR : 125.5, 262.5
 TWR : 118.1, 236.6
 ATIS : 126.4, 344.6

INSTRUMENT APPROACH CHART - ICAO **AERODROME ELEV 9 FT**
 HEIGHTS RELATED TO THR RWY21L - ELEV 7 FT

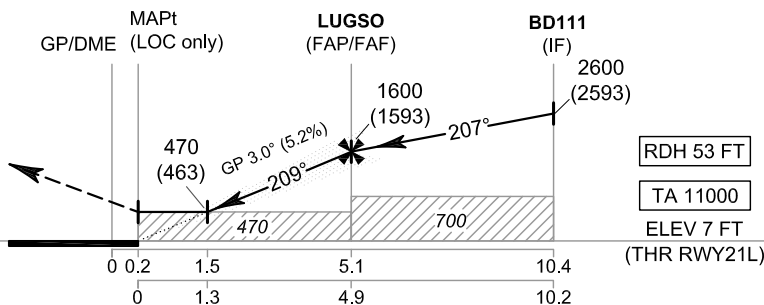
BANGKOK / Don Mueang Intl (VTBD)

ILS or LOC z RWY21L



MISSED APPROACH :

No turn before MAPt (for LOC only).
 Climb on track 209° to BD199, then turn right to BD177, then proceed to HOLYA at 3000 FT, and hold or as directed by ATC.



DME FM GP/DME
 NM FM THR

MAPt	LUGSO	BD111
GP/DME (LOC only)	(FAP/FAF)	(IF)
0.2	5.1	10.4
1.5	4.9	10.2

RDH 53 FT
 TA 11000
 ELEV 7 FT
 (THR RWY21L)

OCA/H		A	B	C	D	GS OUT	Distance (IDMG)	1.5 D	2 D	3 D	4 D	5 D	FAF	
Straight - in Approach	CAT I	220 (213)					Altitude (Height)	470 (463)	625 (618)	940 (933)	1260 (1253)	1575 (1568)	1600 (1593)	
		470 (463)				Ground speed		knot	70	90	100	120	140	160
LOC only		700 (691)				Rate of descent (5.2%)	(ft/min)		369	474	527	632	737	843
Circling (OCH AAL)		800 (791)		1100 (1091)										

CHANGE: NEW CHART.