

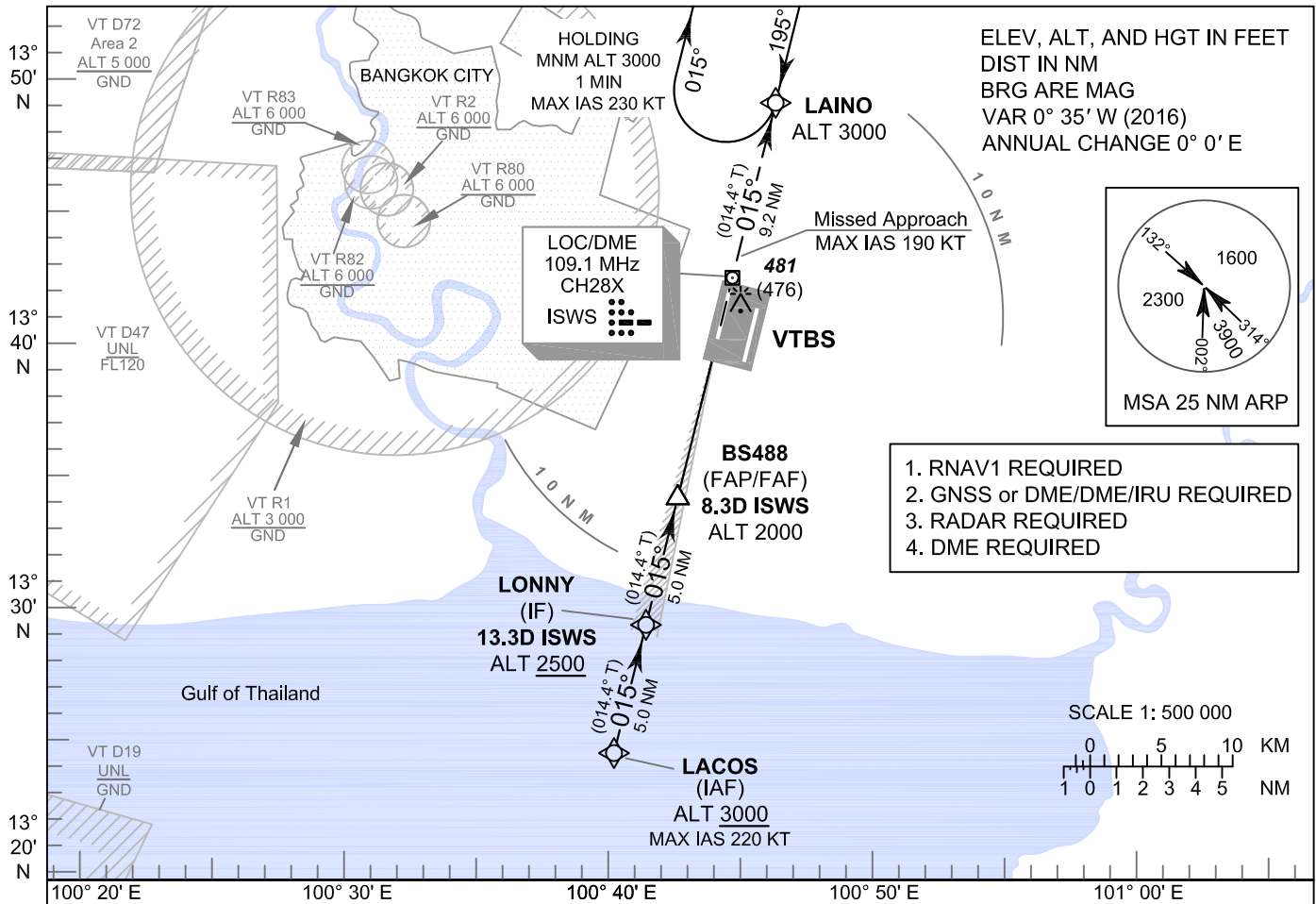
**INSTRUMENT
APPROACH
CHART - ICAO**

**AERODROME ELEV 5 FT
HEIGHTS RELATED TO
THR RWY01L - ELEV 5 FT**

APP	: 119.1, 262.5
	: 120.3, 262.5
	: 121.7, 262.5
	: 122.35, 262.5
	: 124.35, 262.5
	: 125.2, 262.5
ARR	: 121.1
	: 126.3
TWR	: 118.2, 274.5
	: 119.0
ATIS	: 133.6, 278.6

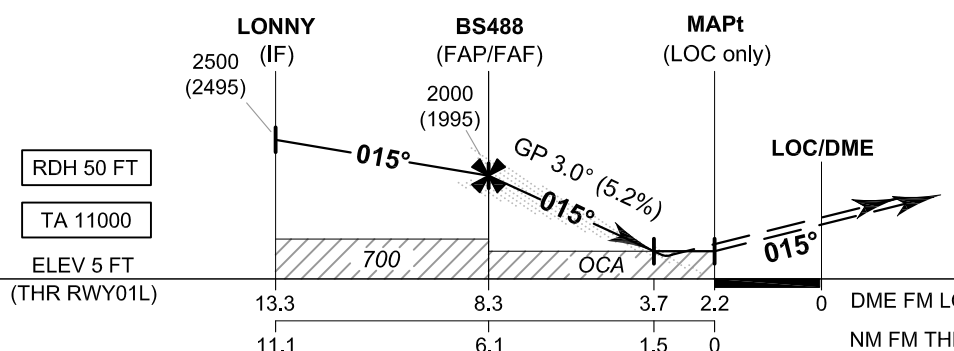
BANGKOK / Suvarnabhumi Intl (VTBS)

**ILS or LOC z RWY01L
CAT II**



1. RNAV1 REQUIRED
2. GNSS or DME/DME/IRU REQUIRED
3. RADAR REQUIRED
4. DME REQUIRED

MISSED APPROACH:
No turn before MAPt (for LOC only).
Speed restricted to **MAX IAS 190 KT**.
Climb to 3000 FT on course 015° to LAINO and hold or as directed by ATC.
(If unable to reach 3000 FT at LAINO, continue climb in the holding pattern.)



OCA/H		A	B	C	D	GS OUT	Distance (ISWS)	FAF	8 D	7 D	6 D	5 D	4 D	3.7 D
Straight-in Approach	CAT I	230 (225) *					Altitude (Height)	2000	1890	1570	1255	940	625	530
	CAT II	105 (100) **				(1995)		(1885)	(1565)	(1250)	(935)	(620)	(525)	
LOC only		530 (525)				Ground speed	knot	70	90	100	120	140	160	
Circling (OCH AAL)		800 (795)		900 (895)		Rate of descent (5.2%)	ft/min	369	474	527	632	737	843	

* These procedures require a missed approach climb gradient of 5% (304 FT/NM) until passing ALT 1000 FT. For aircraft which only achieve a 2.5% (152 FT/NM) climb gradient, the CAT I OCA (OCH) is 370 (365) FT

** These procedures require a missed approach climb gradient of 4% (243 FT/NM) until passing ALT 1000 FT. For aircraft which only achieve a 2.5% (152 FT/NM) climb gradient, the CAT II OCA (OCH) is 295 (290) FT

CHANGE: IAF AND IF REVISED.