

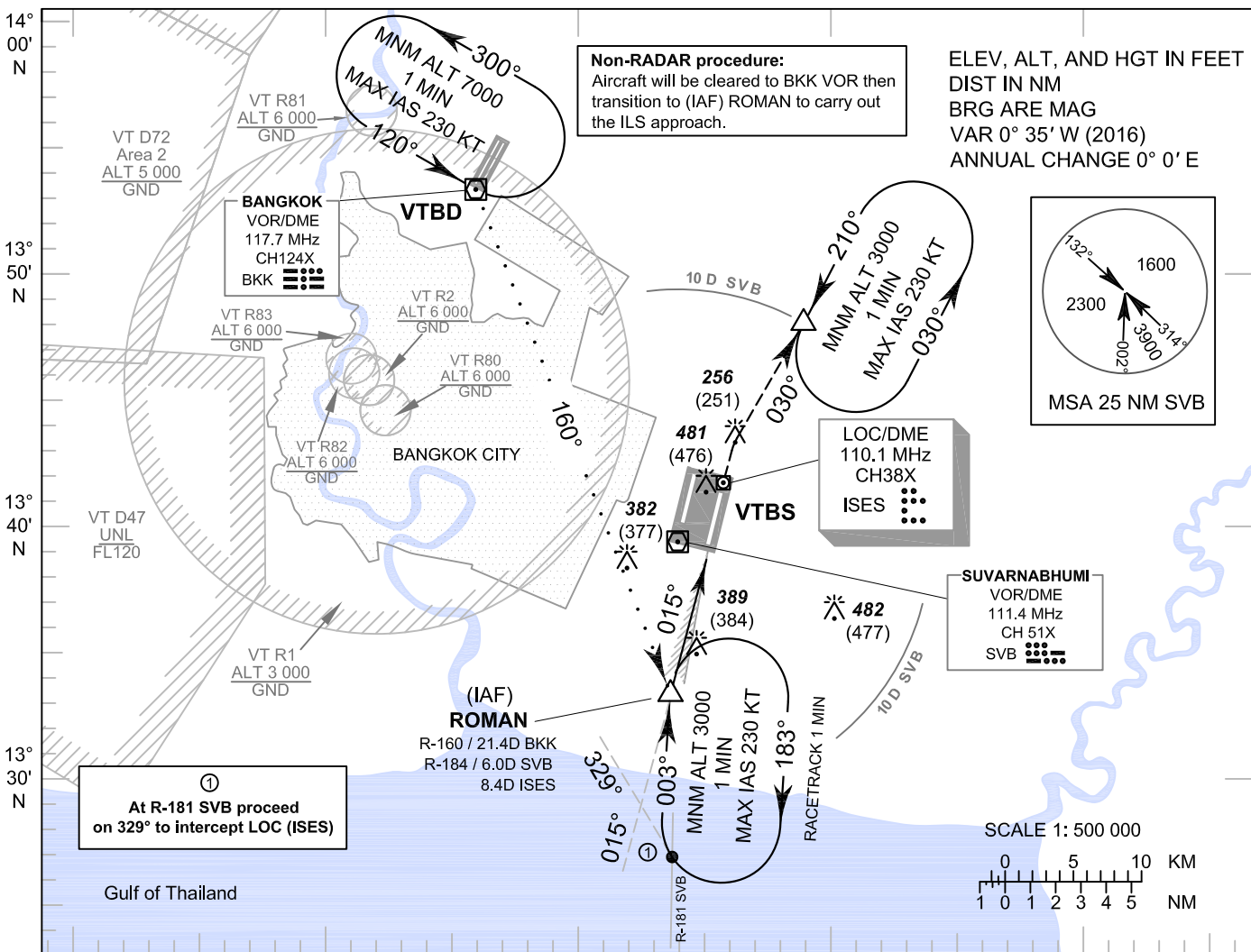
**INSTRUMENT  
APPROACH  
CHART - ICAO**

**AERODROME ELEV 5 FT  
HEIGHTS RELATED TO  
THR RWY01R - ELEV 5 FT**

**BANGKOK / Suvarnabhumi Intl (VTBS)**

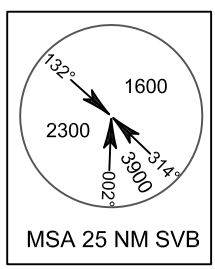
**ILS or LOC y RWY01R  
CAT II**

APP	: 119.1, 262.5
	: 120.3, 262.5
	: 121.7, 262.5
	: 122.35, 262.5
	: 124.35, 262.5
	: 125.2, 262.5
ARR	: 121.1
	: 126.3
TWR	: 118.2, 274.5
	: 119.0
ATIS	: 133.6, 278.6



**Non-RADAR procedure:**  
Aircraft will be cleared to BKK VOR then transition to (IAF) ROMAN to carry out the ILS approach.

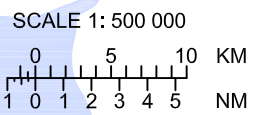
ELEV, ALT, AND HGT IN FEET  
DIST IN NM  
BRG ARE MAG  
VAR 0° 35' W (2016)  
ANNUAL CHANGE 0° 0' E



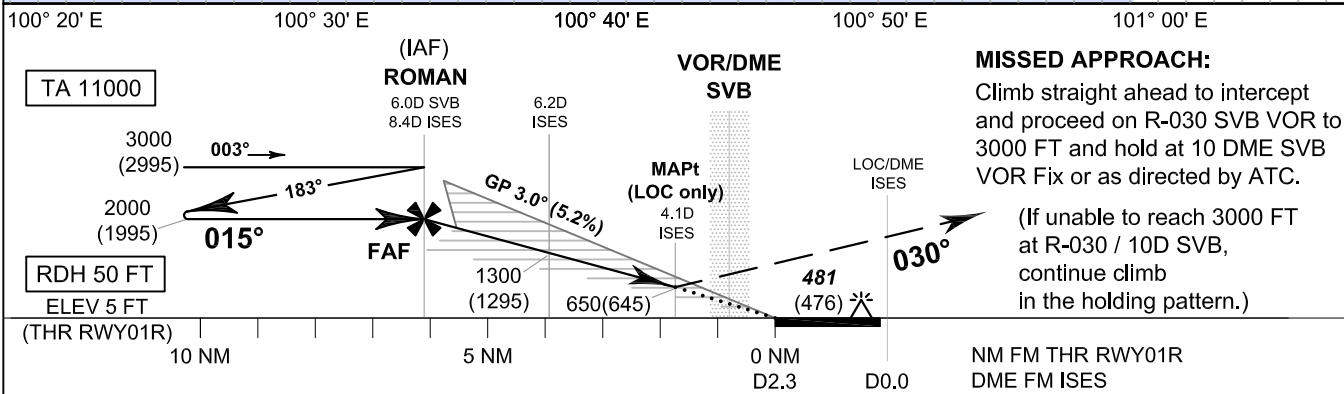
① At R-181 SVB proceed on 329° to intercept LOC (ISES)

**SUVARNABHUMI**  
VOR/DME  
111.4 MHz  
CH 51X  
SVB

**LOC/DME**  
110.1 MHz  
CH 38X  
ISES



CHANGE: REALIGNMENT, MISSED APPROACH INSTRUCTION.



OCA/H		A	B	C	D	ISES DME	FAF	8.0	7.0	6.0	5.0	MAPt
Straight-in Approach	CAT I	205 (200)				Altitudes	2000	1870	1550	1240	920	650
	CAT II	105 (100)				Speed / Knots		100	120	140	160	180
LOC only		650 (645)				FAF-MAPt 4.3 NM		2 : 35	2 : 09	1 : 50	1 : 36	1 : 26
Circling (OCH AAL)		800 (795)		900 (895)		Rate of descent (ft/min)		530	640	745	850	955