

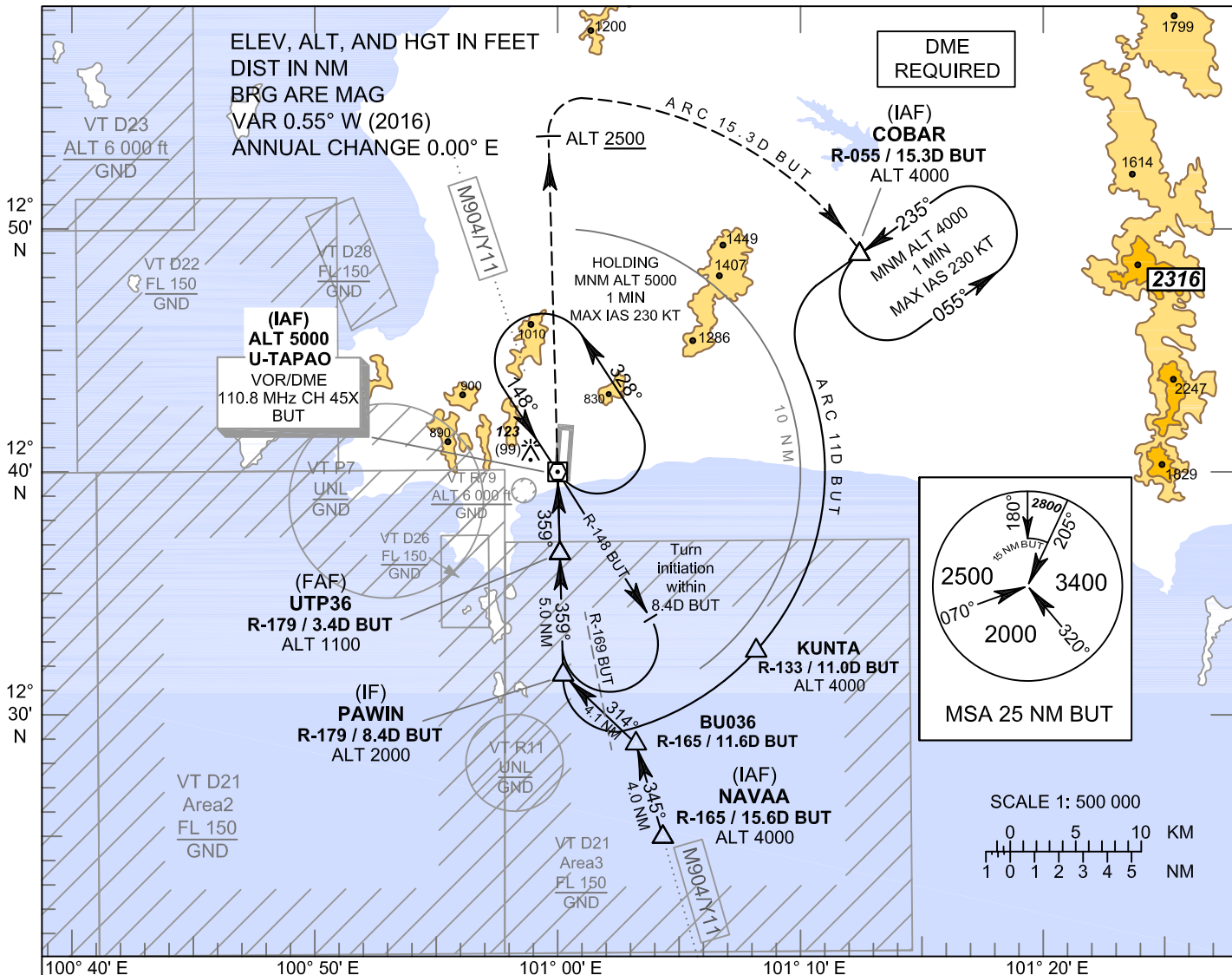
**INSTRUMENT  
APPROACH  
CHART - ICAO**

**AERODROME ELEV 59 FT**  
HEIGHTS RELATED TO  
THR RWY36 - ELEV 24 FT

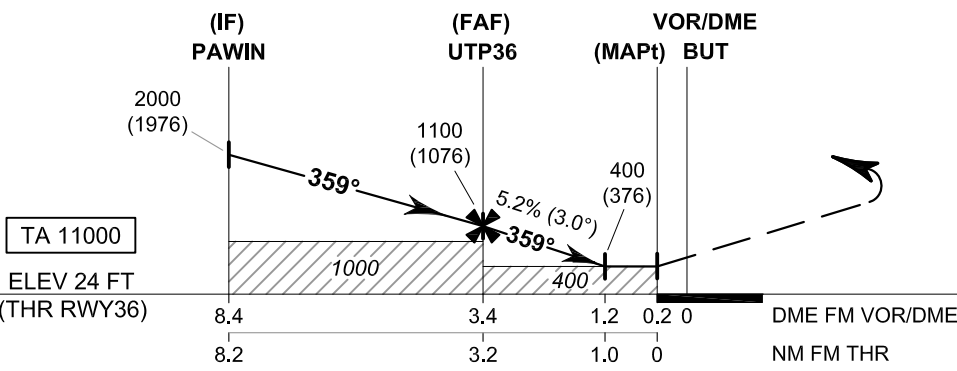
APP : 119.7 , 134.5  
: 238.3 , 273.3  
TWR : 118.1 , 118.3  
: 227.0  
GND : 121.9 , 275.8

**RAYONG / U-TAPAO RAYONG  
PATTAYA INTL (VTBU)**

**VOR RWY36**



**CAUTION: Aircraft shall avoid entering VT R11**



OCA/H	A	B	C	D	Distance (BUT)	FAF	3 D	2 D	1.2 D		
Straight-in Approach	400 (376)				Altitude (Height)	1100 (1076)	960 (936)	645 (621)	400 (376)		
					Ground speed	knot 70	90	100	120	140	160
Circling (OCH AAL)	1200 (1141)		1450 (1391)		Rate of descent	(ft/min) 369	474	527	632	737	843