

**INSTRUMENT
APPROACH
CHART - ICAO**

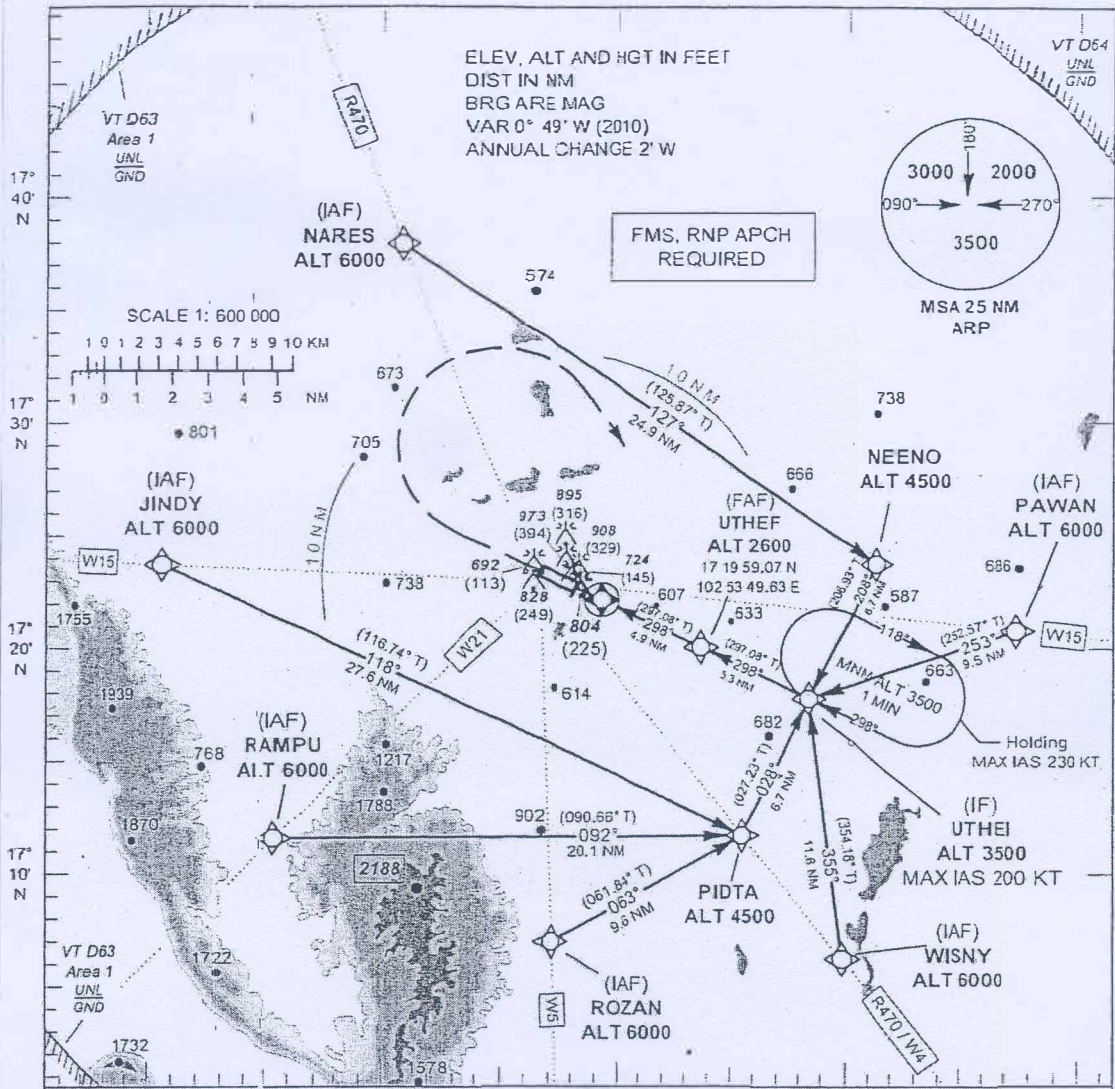
**AERODROME ELEV 579 FT
HEIGHTS RELATED TO
AERODROME ELEV**

APP : 126.2 , 265.9
TWR : 122.5 , 355.4
GND : 121.9 , 275.8

UDON THANI / Udon thani (VTUD)

RNAV (GNSS) RWY30

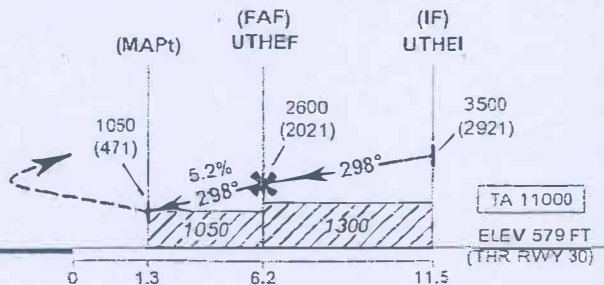
ELEV, ALT AND HGT IN FEET
DIST IN NM
BRG ARE MAG
VAR 0° 49' W (2010)
ANNUAL CHANGE 2' W



MISSED APPROACH:

No turn before MAPt.

Climb on track 298° to 1900 (1321) FT then turn right direct to IF at 3500 (2921) FT and hold or as directed by ATC.



NM FM THR 30

OCA/H	A	B	C	D	NM to THR 30	1.3 NM	2 NM	3 NM	4 NM	5 NM	6 NM	FAF
LNAV	1050 (471)				Altitude (Height)	1050 (471)	1260 (681)	1575 (996)	1895 (11316)	2210 (1631)	2525 (1946)	2600 (2021)
Circling* (OCH AAL)	1300 (721)				Ground speed (GS)	knot	100	120	140	160	180	200
*FOR CIRCLING RESTRICTIONS SEE VERSO					Rate of descent	(ft/min)	530	630	740	845	950	1055