

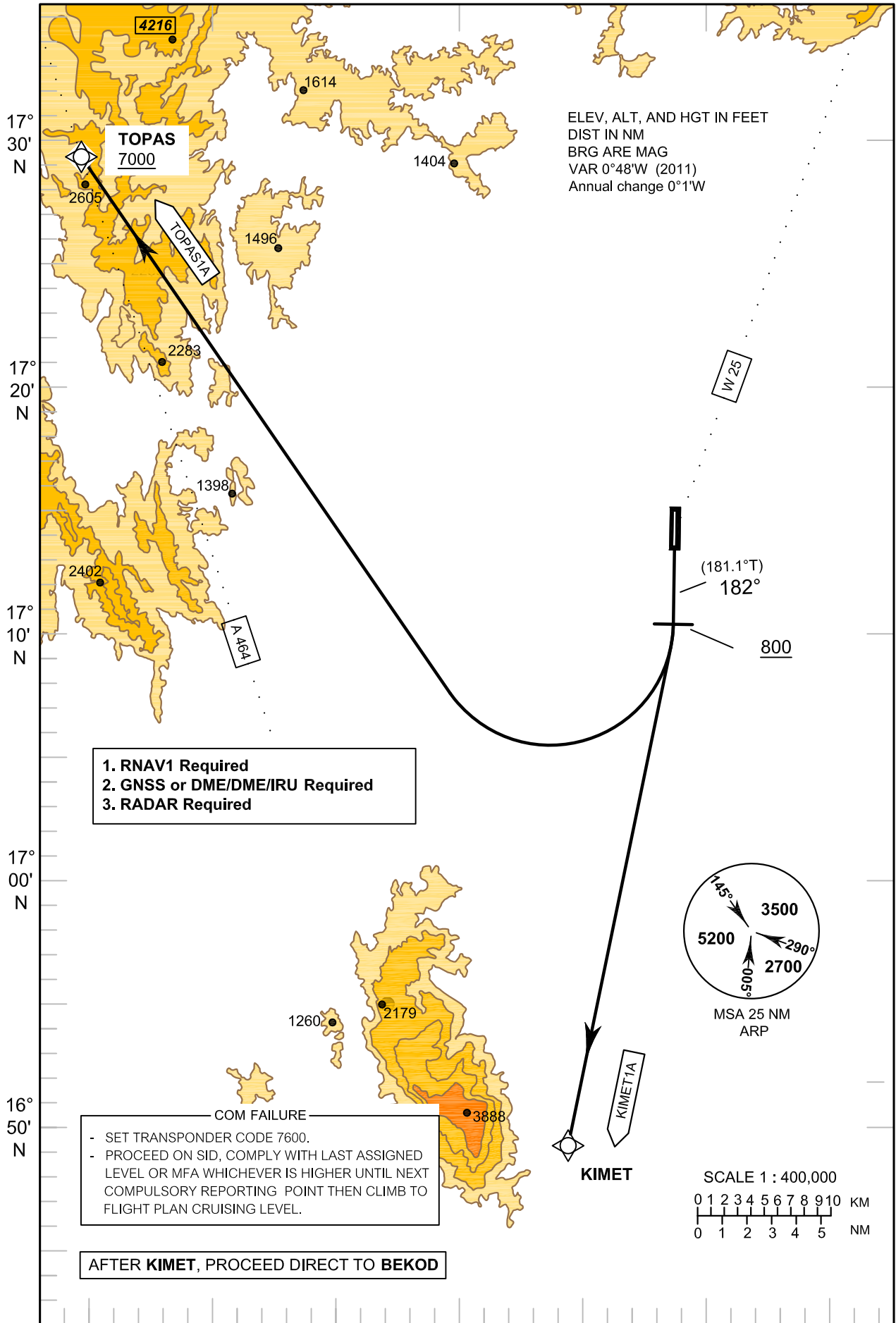
**STANDARD DEPARTURE CHART -
INSTRUMENT (SID) - ICAO**

TRANSITION ALTITUDE
11000 FT

APP : 120.7
TWR : 122.9

**SUKHOTHAI/Sukhothai (VTPO)
RNAV RWY18**

KIMET1A TOPAS1A



ELEV, ALT, AND HGT IN FEET
DIST IN NM
BRG ARE MAG
VAR 0°48'W (2011)
Annual change 0°1'W

- 1. RNAV1 Required
- 2. GNSS or DME/DME/IRU Required
- 3. RADAR Required

COM FAILURE

- SET TRANSPONDER CODE 7600.
- PROCEED ON SID, COMPLY WITH LAST ASSIGNED LEVEL OR MFA WHICHEVER IS HIGHER UNTIL NEXT COMPULSORY REPORTING POINT THEN CLIMB TO FLIGHT PLAN CRUISING LEVEL.

AFTER KIMET, PROCEED DIRECT TO BEKOD

