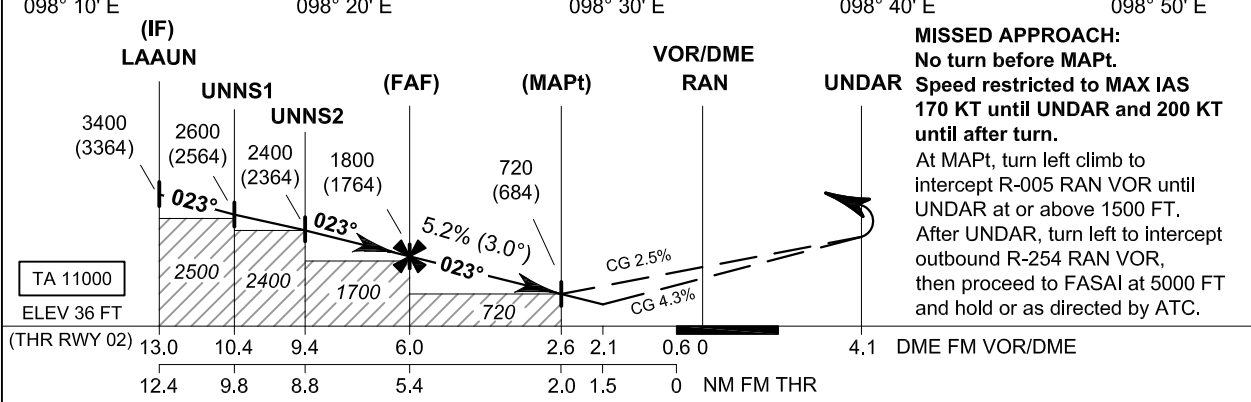
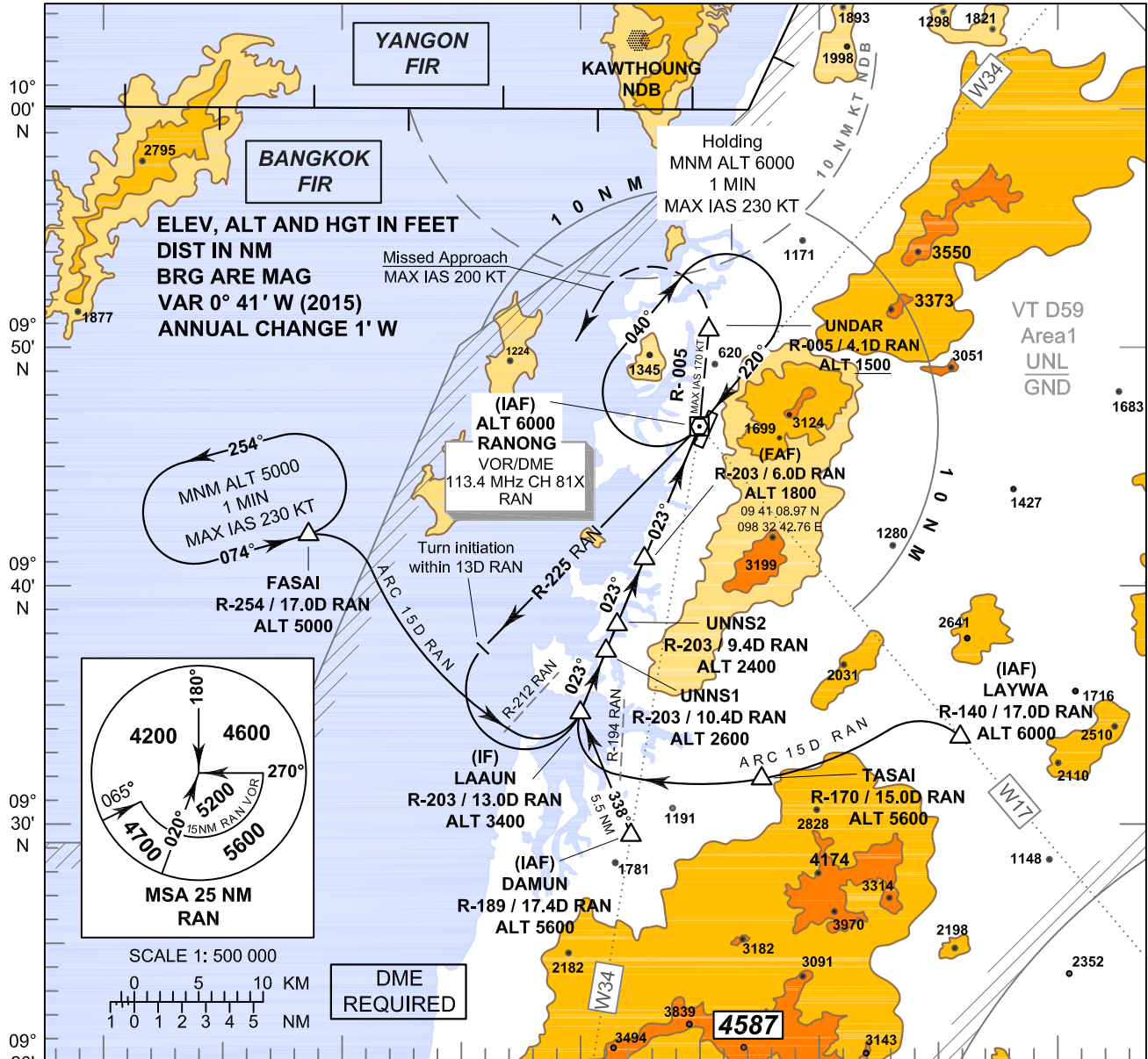


**INSTRUMENT  
APPROACH  
CHART - ICAO**

**AERODROME ELEV 57 FT  
HEIGHTS RELATED TO  
THR RWY 02 - ELEV 36 FT**

APP : 125.1  
TWR : 122.25 , 121.5

**RANONG / Ranong (VTSR)  
VOR RWY02**



OCA/H	A	B	C	D	Distance (RAN)	FAF	5 D	4 D	3 D	2.6 D		
Straight-in Approach	720 (684)				Altitude (Height)	1800 (1764)	1475 (1439)	1160 (1124)	845 (809)	720 (684)		
					Ground speed	knot	70	90	100	120	140	160
Circling (OCH AAL)	Not Authorized				Rate of descent	(ft/min)	369	474	527	632	737	843

**NOTE : OCA (OCH): 560 (524) FT; MAPt at 2.1 D FM VOR/DME can be achieved for all aircraft categories which can commence a missed approach climb gradient of 4.3% (261 FT/NM) until passing UNDAR.**