

**STANDARD ARRIVAL CHART-
INSTRUMENT (STAR) - ICAO**

TRANSITION ALTITUDE
11000 FT

SPEED RESTRICTION
MAX IAS 250 KT AT OR
BELOW ALT 10000 FT
UNLESS OTHERWISE
AUTHORIZED BY ATC.

APP : 119.1, 262.5
: 120.3, 262.5
: 121.7, 262.5
: 122.35, 262.5
: 124.35, 262.5
: 125.2, 262.5

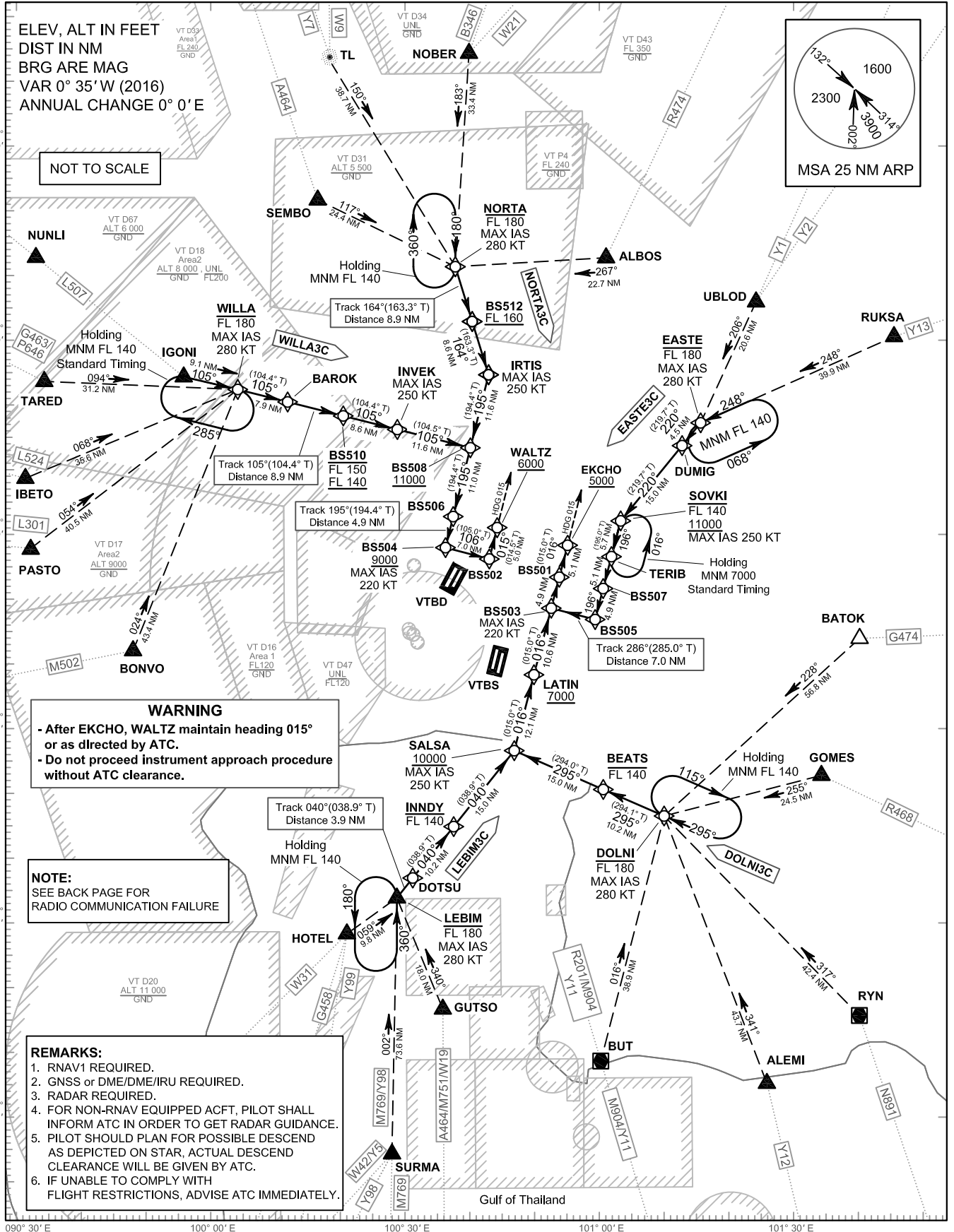
ARR : 121.1
: 126.3

TWR : 118.2, 274.5
: 119.0

ATIS : 133.6, 278.6

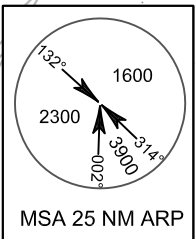
**BANGKOK/Suvarnabhumi Intl (VTBS)
RNAV RWY19L/19R**

DOLNI3C EASTE3C
LEBIM3C NORTA3C WILLA3C



ELEV, ALT IN FEET
DIST IN NM
BRG ARE MAG
VAR 0° 35' W (2016)
ANNUAL CHANGE 0° 0' E

NOT TO SCALE



WARNING

- After EKCHO, WALTZ maintain heading 015° or as directed by ATC.
- Do not proceed instrument approach procedure without ATC clearance.

NOTE:
SEE BACK PAGE FOR
RADIO COMMUNICATION FAILURE

REMARKS:

1. RNAV1 REQUIRED.
2. GNSS or DME/DME/IRU REQUIRED.
3. RADAR REQUIRED.
4. FOR NON-RNAV EQUIPPED ACFT, PILOT SHALL INFORM ATC IN ORDER TO GET RADAR GUIDANCE.
5. PILOT SHOULD PLAN FOR POSSIBLE DESCEND AS DEPICTED ON STAR, ACTUAL DESCEND CLEARANCE WILL BE GIVEN BY ATC.
6. IF UNABLE TO COMPLY WITH FLIGHT RESTRICTIONS, ADVISE ATC IMMEDIATELY.

CHANGE: Y5, Y98 AND Y99 ADDED.