

STANDARD DEPARTURE CHART - INSTRUMENT (SID) - ICAO

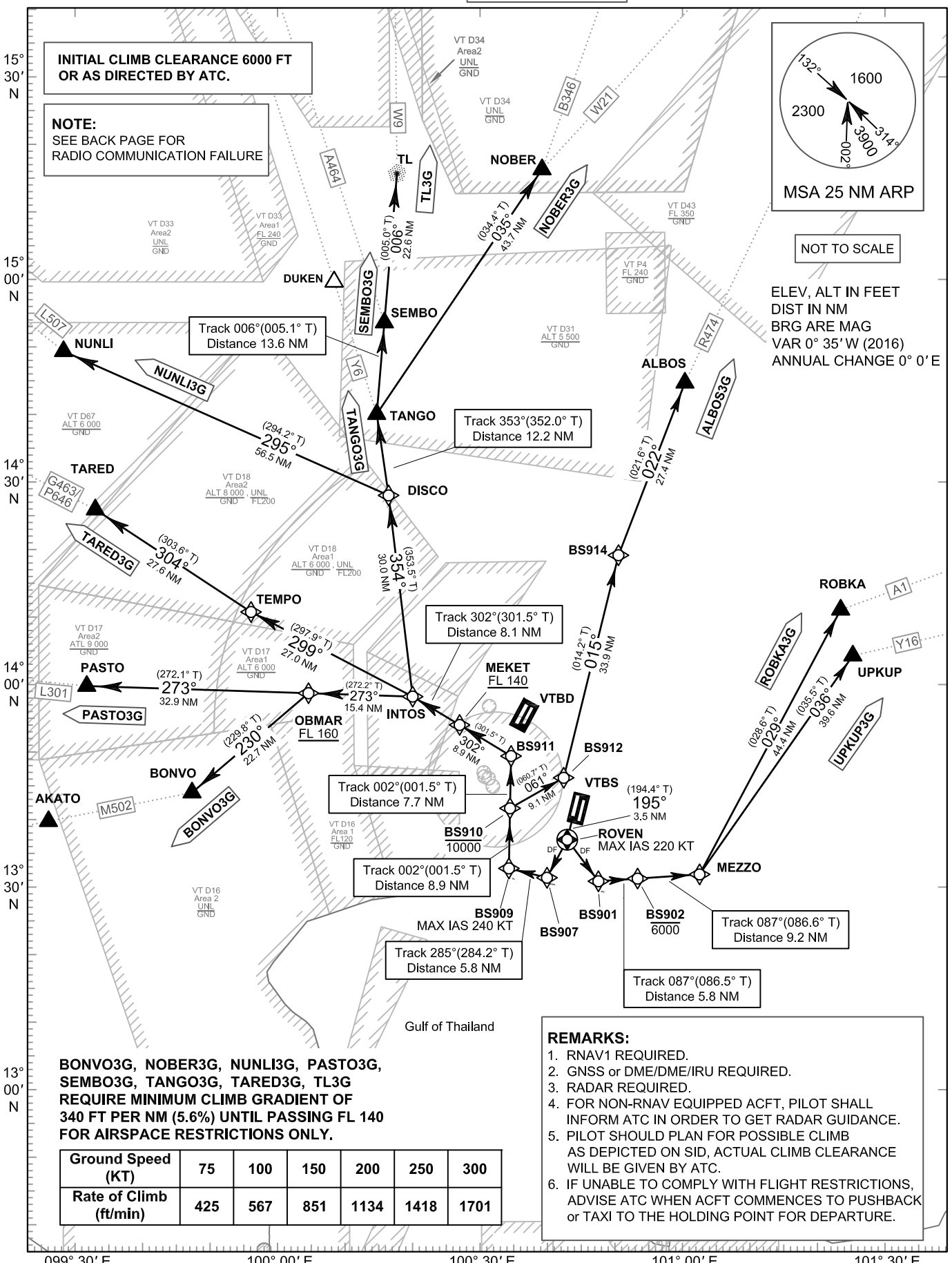
TRANSITION ALTITUDE
11000 FT

SPEED RESTRICTION
MAX IAS 250 KT AT OR BELOW ALT 10000 FT UNLESS OTHERWISE AUTHORIZED BY ATC.

APP : 119.1, 262.5
: 120.3, 262.5
: 121.7, 262.5
: 122.35, 262.5
: 124.35, 262.5
: 125.2, 262.5
ARR : 121.1
: 126.3
TWR : 118.2, 274.5
: 119.0
ATIS : 133.6, 278.6

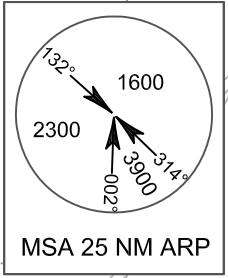
**BANGKOK/Suvarnabhumi Intl (VTBS)
RNAV RWY19R**

ALBOS3G BONVO3G
NOBER3G NUNLI3G PASTO3G
ROBKA3G SEMBO3G TANGO3G
TARED3G TL3G UPKUP3G



INITIAL CLIMB CLEARANCE 6000 FT OR AS DIRECTED BY ATC.

NOTE:
SEE BACK PAGE FOR RADIO COMMUNICATION FAILURE



NOT TO SCALE

ELEV. ALT IN FEET
DIST IN NM
BRG ARE MAG
VAR 0° 35' W (2016)
ANNUAL CHANGE 0° 0' E

BONVO3G, NOBER3G, NUNLI3G, PASTO3G, SEMBO3G, TANGO3G, TARED3G, TL3G REQUIRE MINIMUM CLIMB GRADIENT OF 340 FT PER NM (5.6%) UNTIL PASSING FL 140 FOR AIRSPACE RESTRICTIONS ONLY.

Ground Speed (KT)	75	100	150	200	250	300
Rate of Climb (ft/min)	425	567	851	1134	1418	1701

REMARKS:

1. RNAV1 REQUIRED.
2. GNSS or DME/DME/IRU REQUIRED.
3. RADAR REQUIRED.
4. FOR NON-RNAV EQUIPPED ACFT, PILOT SHALL INFORM ATC IN ORDER TO GET RADAR GUIDANCE.
5. PILOT SHOULD PLAN FOR POSSIBLE CLIMB AS DEPICTED ON SID, ACTUAL CLIMB CLEARANCE WILL BE GIVEN BY ATC.
6. IF UNABLE TO COMPLY WITH FLIGHT RESTRICTIONS, ADVISE ATC WHEN ACFT COMMENCES TO PUSHBACK or TAXI TO THE HOLDING POINT FOR DEPARTURE.

CHANGE: NEW PROCEDURES.