

# STANDARD DEPARTURE CHART - INSTRUMENT (SID) - ICAO

TRANSITION ALTITUDE  
11000

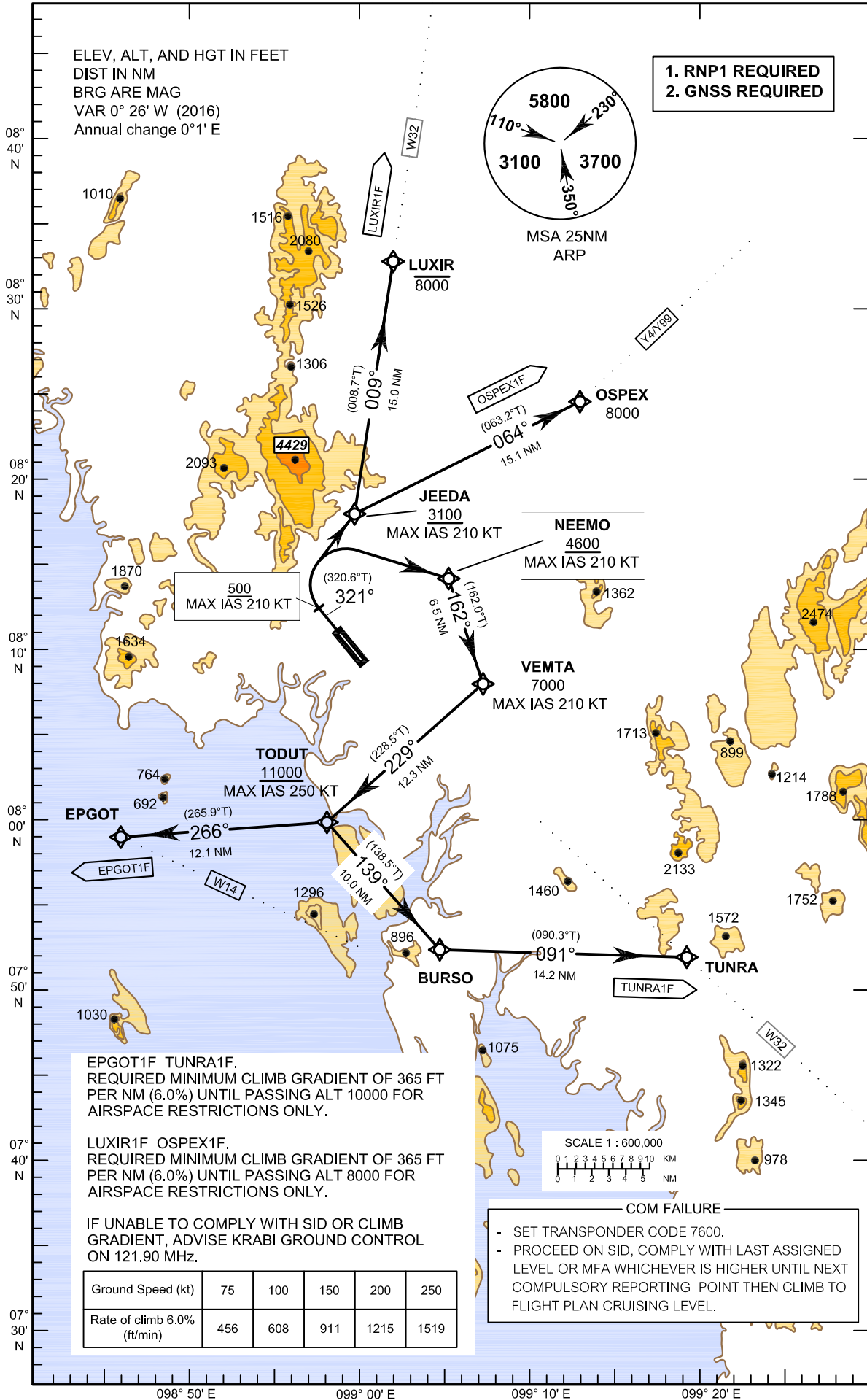
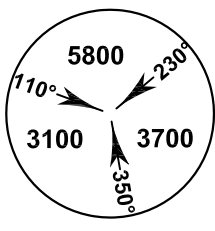
APP : 120.05  
TWR : 122.5, 236.6  
GND : 121.9  
ATIS : 132.4

**KRABI/Krabi (VTSG)  
RNAV RWY32**

EPGOT1F LUXIR1F  
OSPEX1F TUNRA1F

ELEV, ALT, AND HGT IN FEET  
DIST IN NM  
BRG ARE MAG  
VAR 0° 26' W (2016)  
Annual change 0°1' E

**1. RNP1 REQUIRED  
2. GNSS REQUIRED**

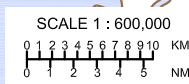


EPGOT1F TUNRA1F.  
REQUIRED MINIMUM CLIMB GRADIENT OF 365 FT PER NM (6.0%) UNTIL PASSING ALT 10000 FOR AIRSPACE RESTRICTIONS ONLY.

LUXIR1F OSPEX1F.  
REQUIRED MINIMUM CLIMB GRADIENT OF 365 FT PER NM (6.0%) UNTIL PASSING ALT 8000 FOR AIRSPACE RESTRICTIONS ONLY.

IF UNABLE TO COMPLY WITH SID OR CLIMB GRADIENT, ADVISE KRABI GROUND CONTROL ON 121.90 MHz.

Ground Speed (kt)	75	100	150	200	250
Rate of climb 6.0% (ft/min)	456	608	911	1215	1519



**COM FAILURE**

- SET TRANSPONDER CODE 7600.
- PROCEED ON SID, COMPLY WITH LAST ASSIGNED LEVEL OR MFA WHICHEVER IS HIGHER UNTIL NEXT COMPULSORY REPORTING POINT THEN CLIMB TO FLIGHT PLAN CRUISING LEVEL.

CHANGE: TWR FREQUENCY, GND FREQUENCY, ATIS FREQUENCY.