

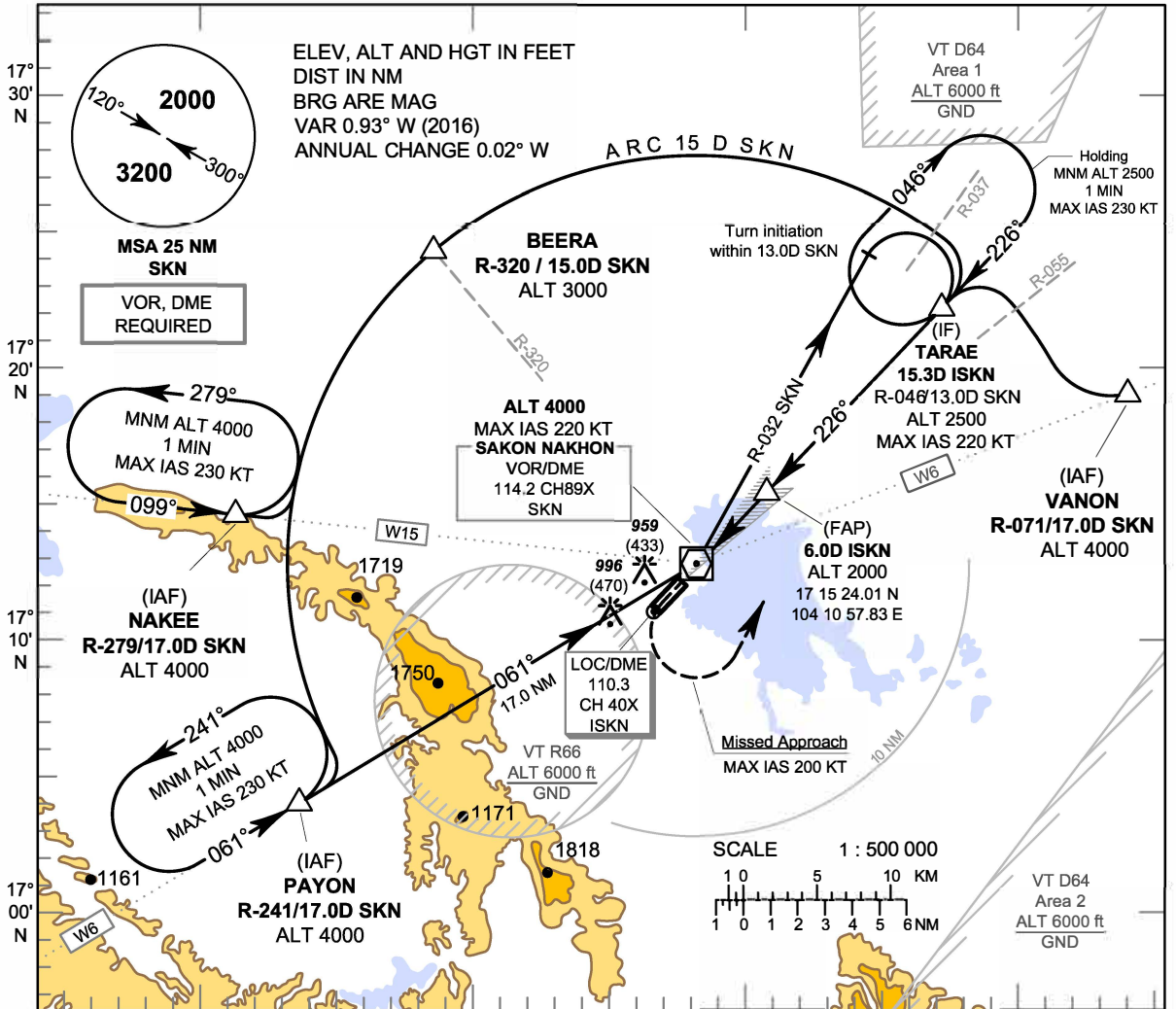
INSTRUMENT APPROACH CHART - ICAO

AERODROME ELEV 529 FT
 HEIGHTS RELATED TO THR RWY23 - ELEV 526 FT

APP : 123.35
 TWR : 119.65 , 236.6

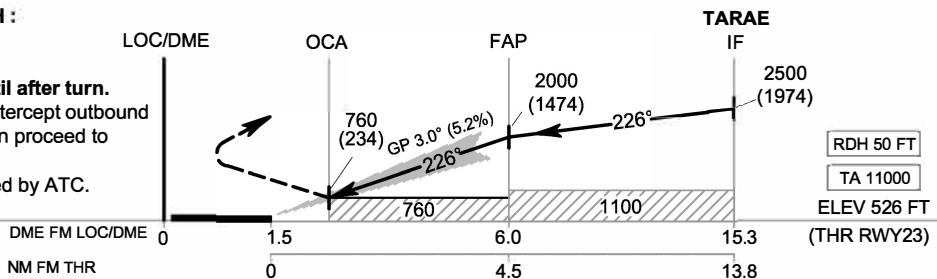
SAKON NAKHON / Sakon Nakhon (VTUI)

ILS RWY23



MISSED APPROACH :

Speed restricted to MAX IAS 200 KT until after turn.
 At OCA, turn left to intercept outbound R-046 SKN VOR, then proceed to TARAE at 2500 FT, and hold or as directed by ATC.



OCA/H		A	B	C	D	Ground speed		knot	70	90	100	120	140	160	
Straight - in Approach	CAT I	760 (234)				Rate of descent (3.0°)	(ft/min)	372	478	531	637	743	849		
		1400 (871)						372	478	531	637	743	849		