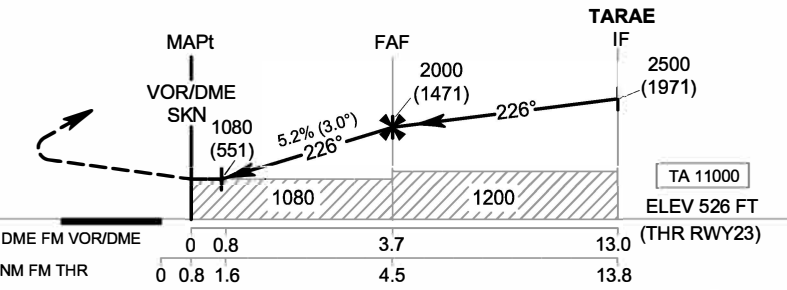


MISSED APPROACH :

Speed restricted to MAX IAS 200 KT until after turn.
 At MAPt, turn left to intercept outbound R-046 SKN VOR, then proceed to TARAE at 2500 FT, and hold or as directed by ATC.



OCA/H	A	B	C	D	Distance to SKN	0.8 D	1 D	2 D	3 D	FAF		
Straight - in Approach	1080 (551)				Altitude (Height)	1080 (551)	1150 (621)	1465 (936)	1780 (1251)	2000 (1471)		
					Ground speed	knot	70	90	100	120	140	160
Circling (OCH AAL)	1400 (871)				Rate of descent (5.2%)	(ft/min)	369	474	527	632	737	843